

Tire lifter User Manual



Content

1、Description.....	2
2、Overview	4
2.1 Instruction.....	4
2.2 Safety operation	4
3、shiping.....	5
4、Test	5
5、Service and Maintenance.....	6
6、Pneumatic Diagram.....	7
7、Exploded drawings.....	8

introduction:

Thank you for purchasing our tire lift roller. This machine has the best quality. In order to operate correctly and prolong the use time of the machine, please be sure to read the instructions of each operation part of this manual carefully.

Parameter description:

The "Tire lift Roller Model Number" and "Product Number" are complete to make it easier to provide our technical service and supply the required parts. For greater clarity and ease of use, we have provided the data for the tire lift roller frame in the box below. If there is any inconsistency between the data in this manual and the data on the sign, the data on the sign shall prevail.

This manual is an integral part of using the machine. Using a tire lift roller
Before, read each part of the manual carefully, especially the two parts of
operation safety and machine maintenance



Save this manual for future use!

1、Description



A	up/down control handle
B	Move handle
C	Tool handle
D	tire stage
E	lift cylinder
F	oil water separate
G	tire stage

Fig 1

Dangerous:

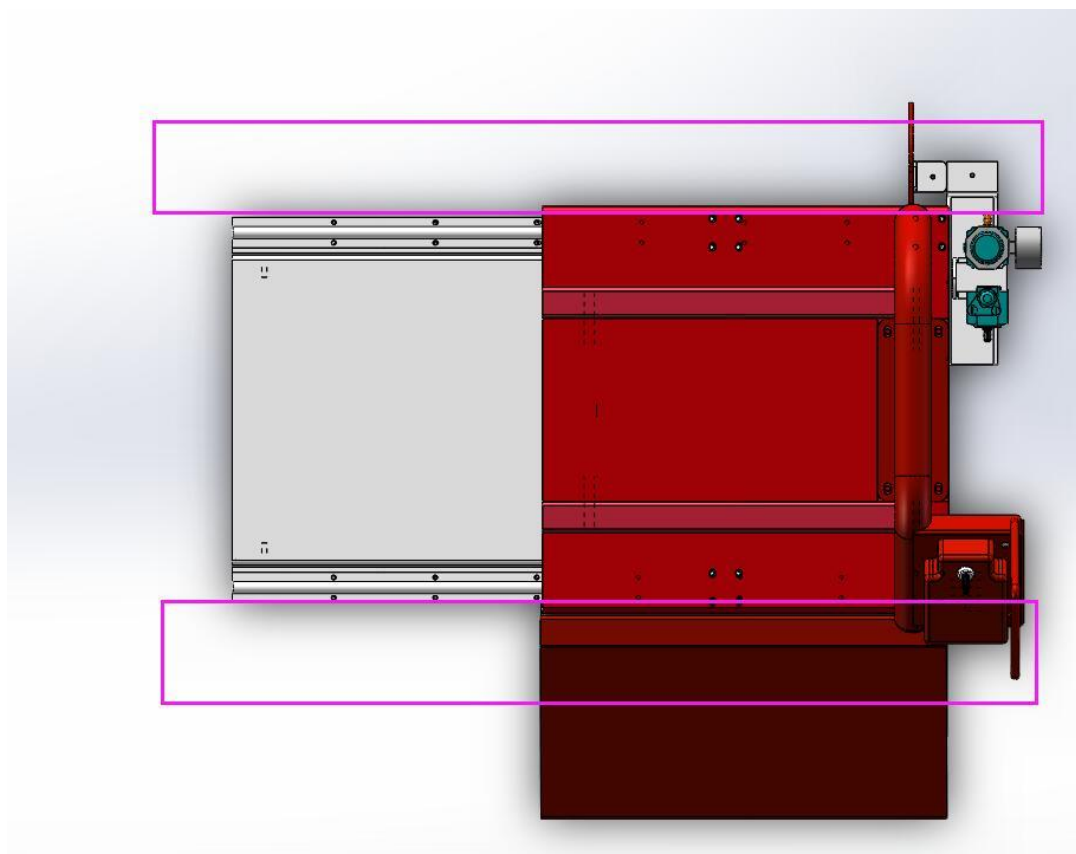


Fig 2

Note: The pink frame area is the edge of the lift area of the lift truck. Please make sure that there are no obstacles in the area. When working, please keep no part of your body from entering this area to avoid injury. (Figure 2)

2、 Overview

2.1 Instruction

- The design of the tire turning frame is to assist in lifting or unloading tires with a maximum weight of less than 75kg during the operation of the tire changer.



Do not operate in accordance with the requirements of the manual.

- The manufacturer is not responsible for any damage caused by unreasonable operation not in accordance with the instructions.

2.2 Safety operation



Tire lifter are for trained professionals only.

- Changes to the machine not approved by the manufacturer, the manufacturer is not responsible for any damage caused.
- If the user violates the safety rules and disassembles the safety device of the machine to cause damage, the manufacturer will immediately stop the safety commitment to the machine.

3、 shipping

- Tire lifter must be shipped in original factory packaging, and place it in the location indicated on the box.
- The packaged machine must be moved by a forklift with the corresponding lifting capacity, the insertion direction of the trolley is shown in Figure 3.

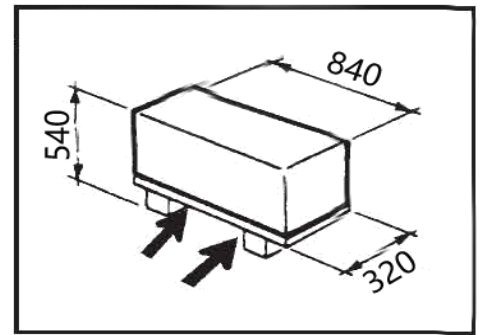


Fig 3

4、 Test



Before turning on the machine, determine if the user's air supply matches the machine's requirements.

- Connect the compressed air system to the machine through the fitting on the oil water separator (F) on the side of the case. See (Figure 4)

Adjust



Fig 4

- Move the hand valve stem (A) up and down, and move it up to raise the lift truck. When pulled down, the lift truck descends.
- Hold the handle of the pulley (B), slide the pulley to the left or right, smoothly and without blocking.

5、Service and Maintenance

- In order to prolong the service life of the tire rollover rack, it is necessary to carry out daily maintenance and maintenance according to the requirements of the manual.

- If repairs and maintenance are not carried out regularly, the operation and reliability of the machine will not be guaranteed, and it may even cause danger to the operator or people near the machine.



Specially Note: The manufacturer is not responsible for the damage caused by the user's use of other manufacturers' parts or due to the disassembly or damage of the safety device.

- Perform the following maintenance operations every 30 days:

Control the level of oil in the lubricator. If the level is low, you need to unscrew the oil cup F before adding it.

Only use oils of the type specified as ISO HG and with a viscosity of ISO VG32, Such as:

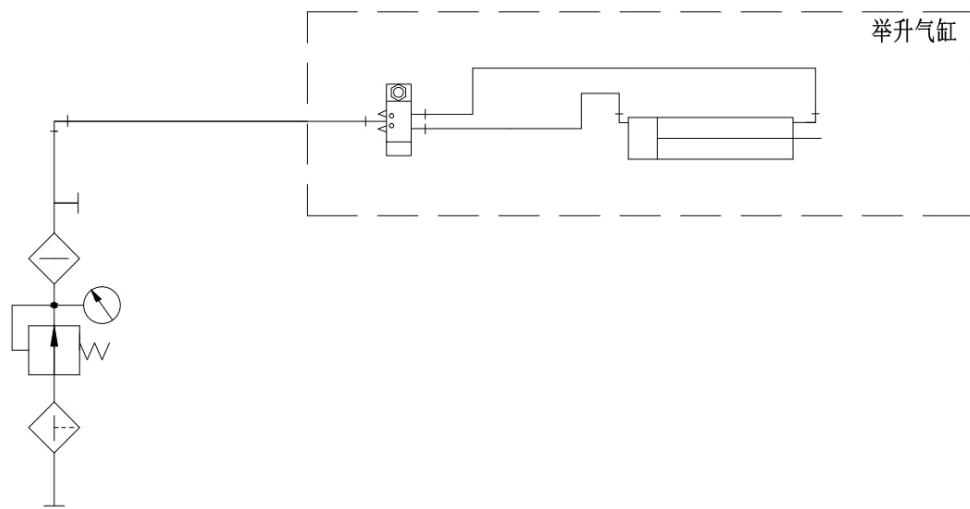
ESSO Febis K32,MOBIL Vacouline 1405,KLUBER32.

When turning the hand valve up and down 3-4 times, check whether oil droplets enter the oil cup F. If not, adjust the oil cup screw.

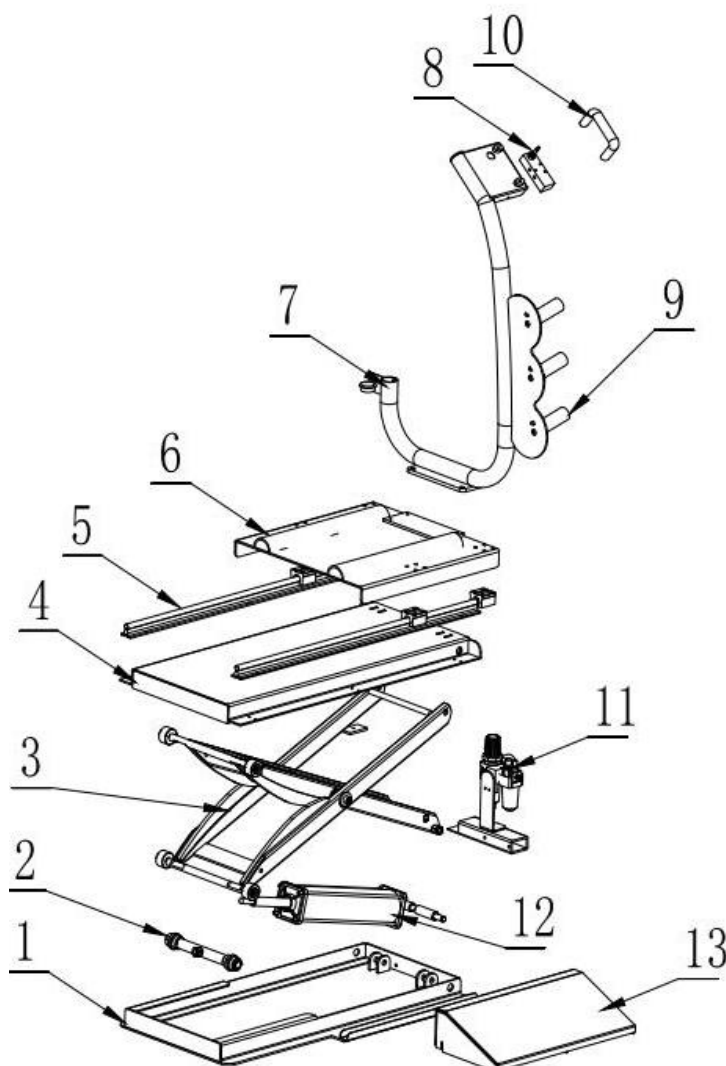
note: Retighten the screws on the carriage (D) after 20 days of first use.

Feature	Support data
Air pressure	8bar-10bar(145 Psi)
Max tire weight	75kg
Main lift level	100mm
Size	800×510×870mm(Maximum height 1210mm)
Gross weight	Standard model 50KG

6、Pneumatic Diagram



7、Exploded drawings



NO.	Name	PLM Code
1	Base plate weldment	MM26003000006
2	Lever shaft assembly	MM26003000007
3	Inner/outer bracket weldment	MM26003000008/9
4	Top plate weldment	MM26003000010
5	Slide rail	MM26003000003
6	Skateboard weldment	MM26003000011
7	Vertical pipe weldment	MM26003000012
8	Lifter valve	MM26001061393
9	Tool handle	MM26001075987
10	handle	MM26001075988
11	Complete oil	MM26003000001
12	cylinder assembly	MM26003000004
13	Upper flange weldment	MM26003000013