

# **TYRE CHANGER**

## **INSTRUCTION & MAINTENANCE MANUAL**

*We follow the way that wheel moving!*



Read this entire manual carefully and completely  
before installation or operation of the tire changer

# INDEX

# PAGE

1. Introduction:.....	2
2. Warning label and sticking position:.....	2
3. Technical data .....	3
4. Transport:.....	3
5. Unpacking & Inspection:.....	3
6. Workplace requirements: .....	3
7. Position and installation:.....	4
8. Electricity and Pneumatic connections: .....	4
9. Adjusting operation:.....	4
9.1. Breaking the tyre bead: .....	5
9.2. Demounting the tyre : .....	5
9.3. Mounting the tyre :.....	5
10. Inflating the tire: .....	6
11. Moving machine: .....	6
12. Maintenance:.....	7
13. Trouble shooting table: .....	8
14. Exploded drawing: .....	9
15. Circuit diagram: .....	18
16. Pneumatic drawing: .....	18
17.Color reference for square columns in the attachmen: .....	19

# Tyre Changer

## Warning

This instruction manual is important for the machine, please read carefully before installation and use; also it is important for safe use and machine maintenance of machine. Please keep this manual properly in order to further maintenance of the machine.

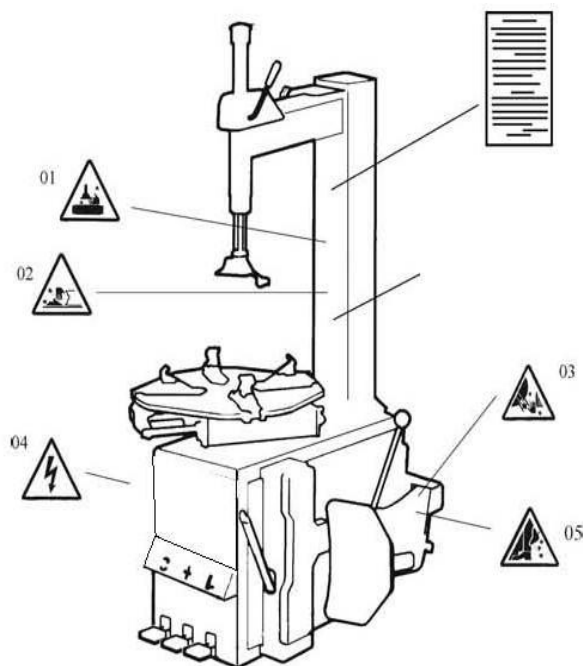
## 1. Introduction:

**Application Range:** The semi-automatic tyre changer is especially designed for demounting / mounting tyres from wheel rims.

**Caution:** Please use the machine only for purpose for which it is designed, don't use it for other purposes.

Manufacturer shall not be liable for any damage or injury caused by failure to comply with these regulations.

**Safety regulation:** Use of this machine is especially reserved to trained and qualified professional persons, those who already read the introduction manual carefully, or someone have the experience for operating similar machinery. Any changes and beyond the scope of use on this machine without manufacturer's permission or do not according to the manual, may cause the malfunction and damage to machine, manufacturer can cancel warranty coverage for above. If some parts are damaged due to some reason, please replace them according to the spare parts list. (Attention: warranty is one year after manufactures' delivery date; warranties exclude the easy-broken parts).



## 2. Warning label and sticking position:

- 01 Don't put hands under the Mounting/demounting head during operation;
- 02 Don't put hands between the jaws during operation;
- 03 Don't put hands inside the tyre bead when demounting the tyre;
- 04 Make sure and to check the system is equipped with a good grounding circuit;
- 05 Don't put feet between the Bead Breaker shovel and the body during operation;

Security warning labels

### Caution:

**When the security warning labels are defaced or off, please recovery them in time!**

**Do not allow to operate when the security warning labels are missed or imperfect.**

**Do not allow to set any objects to obscure the security warning labels.**

Clients can self-set the warning labels (as right picture show) at any necessary positions.



### 3. Technical data

External locking rim dimensions	10~21 "
Internal locking rim dimensions	12~24 "
Max. Wheel diameter	1040mm(41 " )
Max. Wheel width	355mm(14 " )
Working Pressure	8-10bar
Power supply	110V (1ph)/ 220V (1ph)/ 380V (3ph)
Optional Motor power	0.37 kw
Max. Rotating Torque (Turntable)	1078 Nm
Overall Dimension	96*76*93cm
Noise Level	75 Db

#### Remark:

Rim dimensions defined at above table are based on the iron wheel rims. Aluminum rims are thicker than the iron wheel rims, so here above rim dimensions are just for the reference.

Here above machine versions can be equipped with Rapid Tire Inflation Device (client optional device), IT-suffix version, accessory details can be found at the IT-suffix version exploded drawing.

### 4. Transport:

When transporting, the machine should be with original package and placed according to the mark on the package. For the already packaged machine should be handled with a corresponding tonnage forklift for loading and unloading. The location to insert the fork feet shown as **Fig 1**

### 5. Unpacking & Inspection:

Pull out the nail which is nailed on the plate with tip jaw; unpack the carton and plastic cover. Check and make sure all parts shown on the spare parts list are included. If any parts are missing or broken, please do not use the machine and contact the manufacturer or dealer ASAP.

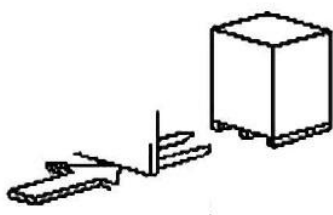


Fig 1

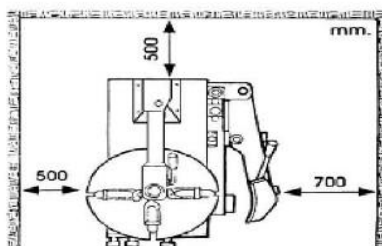


Fig 2

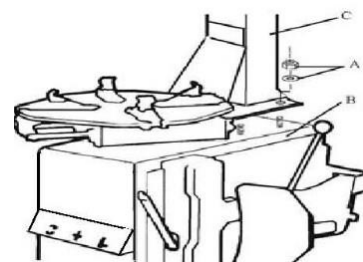


Fig 3

### 6. Workplace requirements:

Choose workplace in compliance with safety regulations. Connect power supply and air source according to manual and workplace must have good air condition; in order to make the machine run well, its workplace requires at least clear space from each wall shown as **Fig 2**. If installing it outdoor, it must be protected by roof against rain and sunshine.

**Warning:** the machine with motor must not be operated in explosive atmosphere.

## 7. Position and installation:

1. Unscrew the nuts at the bottom, position the machine and calibrate it with the horizontal rule. Mount the machine with all the screws and to ensure the machine is stable. Make sure the system is equipped with a good grounding circuit for prevent electric leakage. And have operation range of ground for skid prevention.

2. Unscrew the nut A on the cabinet body B as shown in **Fig 3**.

Lift the column C; mount it on the machine body B by using the nut A through the bolt located on the machine body B. If the column becomes loose after a period of using, tight them immediately. Otherwise the result of damage to the tyre may happen.

## 8. Electricity and Pneumatic connections:

**Caution: Before installation and connection, check to be sure that the electricity power supply corresponds to the machine technical data. All the installation of electric and pneumatic devices must be operated by a professional electrician.**

Connect the compressed air connector which is on the machine right side with compressed air system. The electric grid that the machine connects to must have fuses protection device and good outer cover grounding protection. Install the leakage automatic air switch on the main power supply, leakage current is set at 30A

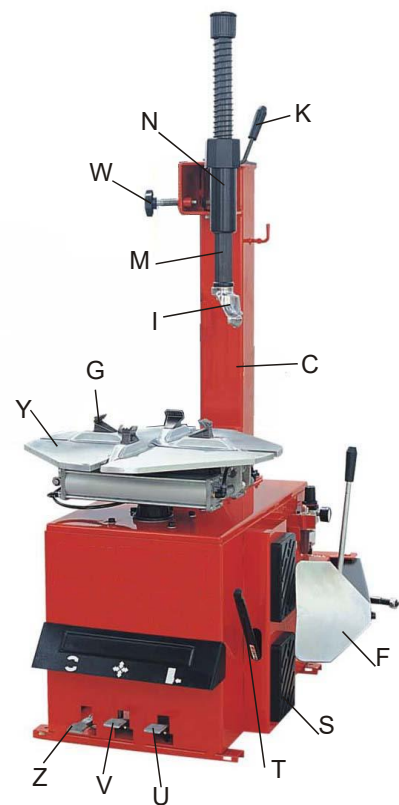


Fig 4

**Caution: No power plug for this machine, the user should self-connect one power plug no less than 16A as well as in line with the machine voltage. Or directly connect with the power supply according to the above requirements.**

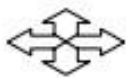
## 9. Adjusting operation:



Turntable Rotation Pedal (Z)



Bead Breaker Pedal (U)



Jaws open and close Pedal (V)

- 1) Tread the Turntable Rotation Pedal (Z), Turntable (Y) clockwise rotation; Lift up the Turntable Rotation Pedal (Z), Turntable (Y) counterclockwise rotation.
- 2) Tread Bead Breaker Pedal (U), Bead Breaker shovel (F) close toward inside; release Bead Breaker Pedal (U), Bead Breaker shovel (F) return to original position.
- 3) Tread Jaws open and close Pedal (V), four jaws (G) on the turntable open; tread again, four jaws (G) close. When the pedal is in the middle position, the four jaws stop moving.

Tyre changer operation is consisted of three parts:

- 1) Breaking the tyre bead
- 2) Demounting the tyre
- 3) Mounting the tyre

**Caution: Before any operations, don't wear loose clothing and wear protective hat, gloves, and skid-proof shoes. Ensure to exhaust the air in the tyre completely, and remove all the wheel weights from the rim.**

### 9.1. Breaking the tyre bead:

Ensure to exhaust the air in the tyre completely, place the tyre against the rubber buffer (S). Bring the paddle against the bead about 10mm from the edge of the rim shown as **Fig 5**. Tread Bead breaker Pedal (U) to push paddle into tyre. Repeat the above operations on different positions around the tyre and both sides of tyre until tyre bead is released completely.

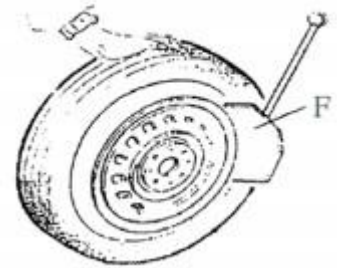


Fig 5

### 9.2. Demounting the tyre :

Ensure to remove all the weights on the wheel rim and to exhaust the air in the tyre completely before this operation. Apply lubricating grease (or similar lubricant) around the tyre bead. Without the lubricant may lead to badly wear and tear on tyre.

Clamp the wheel methods shown as below regarded to the ruled dimension:

a- to clamp the wheel from outside:

Tread the Jaws open and close Pedal (V) halfway down to middle, positioning for the four jaws (G) by reference scale on the Turntable (Y); put the tyre on turntable, hold the rim, and tread the Jaws open and close Pedal (V) until the wheel is secured by the jaws.

b- to clamp the wheel from inside:

Positioning for the four jaws (G) and let them all closed. Put the tyre on the turntable and tread the Jaws open and close Pedal (V) to open the jaws thereby lock the wheel in place.

**Caution: Check to make sure the wheel firmly secured by the four jaws before next step.**

Lower the Vertical Arm (M) until the Mounting/demounting head (I) rests next to the edge of the rim, flip the Locking Handle to lock the Vertical Arm and Swing Arm in position, and also adjust the Rocker Arm make Mounting/demounting head can raise 2mm-3mm automatically from the edge of the wheel rim. Insert the Lifting Lever (T) between the tyre bead and the front section of the mounting/demounting head (I), and move the tyre above the mounting/demounting head as shown as **Fig 6**.

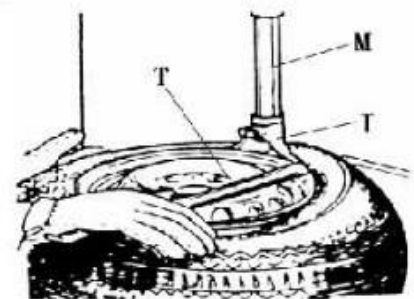


Fig 6

**Caution: Chains, bracelets, loose clothes and anything else close to the rotating parts will bring danger to the operator.**

With the Lifting Lever held in position, tread the Turntable Rotation Pedal (Z), rotate the Turntable (Y) in a clockwise direction until the tyre is completely separated from the wheel rim.

For the other side tyre demounting, keep using the lifting lever to lift the tyre, make the other side tyre separated from the wheel rim.

### 9.3. Mounting the tyre :

**Caution: Check to make sure that the tyre and the wheel rim are of same size before mounting the tyre.**

**To avoid any damage on type, lubricate the tyre bead and the wheel rim with the lubrication recommended by manufacturer. Put on the tyre and check the situation.**

**Caution: When clamp the wheel rim, don't put your hands on the wheel rim to avoid injury during this operation.**

Lock the Hexagonal Vertical Mounting Arm, put the tyre on the rim, let the Rocker Arm back to place as demounting the tyre. And let one side of tyre down bead above the rear section of the Mounting/demounting head, the other side under the front section of the Mounting/demounting head. Suppress the tyre with hands or help arm, and then spin the turntable for mounting the tyre down bead.

Repeat the above operation for mounting the tyre up bead. **(Fig 7)**

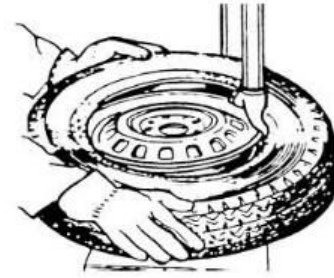


Fig 7

## 10. Inflating the tire:

**Importance: It is very dangerous during inflating operation, take carefully and comply with instruction. When inflating, it will turn to be extremely dangerous if problems happen to tyre or rim. The possible burst force tire goes upward and outward, the big power may cause injury or death of the operator or the people around.**

Tyre may burst caused by following:

- 1) The wheel rim and the tyre are not of the same size;
- 2) The tyre or the wheel rim is damaged;
- 3) The pressure of tyre inflation is over the max. pressure recommended by manufacturer;
- 4) The operator fail to comply with the safety regulation;

Please operate as follows:

- 1) Remove the valve cap from the valve stem;
- 2) Check to make sure the air nozzle is pressed down completely over the threads of the valve stem.
- 3) Check to make sure that the tyre and the wheel rim are of the same size;
- 4) Lubricate both the tyre bead and the wheel rim, additional lubrication is required if needed;
- 5) Inflate the tyre with break, while inflating, check the pressure listed on the pressure gauge, also check whether the bead is fixed or not. Repeat operation above until the bead is secured; you need take special steps when inflating convex rim or double convex rim;
- 6) Continue inflating and check the air pressure frequently until to reach the required pressure.

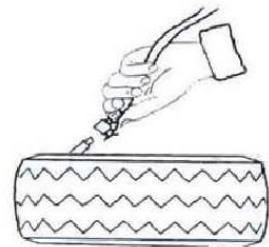


Fig 8

### Note:

**Never exceed the max. inflation pressure given by the tyre manufacturer.**

**Keep hands and your body away from inflating tyres.**

**Only specially trained persons are allowed to perform the operations, do not allow other to operate or be near the tyre changer.**

## 11. Moving machine:

Please use forklift to move the machine. Disconnect the tyre changer from the electricity power supply and pneumatic power supply, lift the base board and insert the feet of forklift. Then mount the tyre changer machine to a new position and fix it tightly.

**Note: the place chosen for fixing the tyre changer must meet the safety regulation.**

## 12. Maintenance:

**Caution:** only the professional persons can do the maintenance. To prolong the machine's life, maintain the machine timely according to the manual. Otherwise, it will impact the reliability of the machine or even cause injury to operator and others nearby.

**Caution:** before performing any maintenance, disconnect the tyre changer from the electric power supply and pneumatic power supply, and tread the Jaws open and close Pedal or Turntable Rotation Pedal for 3~4 times to evacuate all compressed air from the machine. Damaged parts must be replaced by professional persons with the spare parts provided by manufacturer.

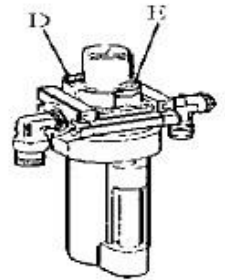


Fig 9

- Clean the machine once every day after work. Clean the dirt on the turntable with diesel oil once per week and lubricate the slides and jaws.
- Following maintenance must be done at least once per month:

Check oil level in Oil Fog Maker, please be filled with SAE30# oil if need. Unscrew with hex wrench (E). Based on connection of compressed air, first to tread Jaws open and close Pedal or Turntable Rotation Pedal 5-6 times, and then check whether oil in Oil Fog Maker drops down a drip of oil. For continuous operation, tread twice every time, drop down a drip of oil, otherwise adjust the screw (D) that controlled oil enter with minus screwdriver.

(Fig 9)

- As shown in Figure 9-1, when you found there are some water in the cup, push up the drain valve to drain away water with your fingers; loosen your fingers after drained water, drain valve can be automatic closed under the action of the spring.

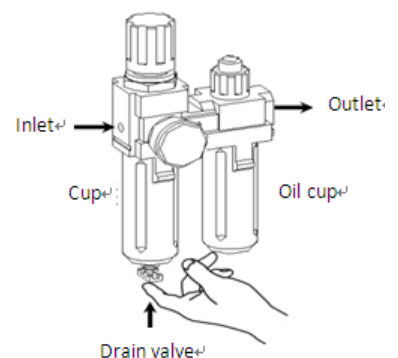


Fig 9-1

**Note:** After the first 20 days of use, retighten the jaws with tightening screws (B) on the Turntable (Fig 10)

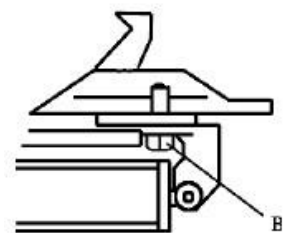


Fig 10

**Note:** in the event of turntable lose power, check to see if the belt is tight as follow steps:

**Caution:** please disconnect the machine from electric power supply and pneumatic power supply.

**Note:** If Hexagonal Vertical Arm not be locked or not meet the requirement that 2-3mm from the bottom of Mounting/demounting head to rim, please adjust Hexagonal Locking Plate, refer to Fig 12 and adjust the (X).

**Note:** In order to achieve the reliability of jaws and Bead Breaker shovel, operate as follows to keep their valves clean:

1. Remove the left side cover of the machine body by unscrewing the two screws;
2. Loosen the valve Muffler (A) which belong to Jaws open and close Pedal and Bead Breaker Pedal; (Fig 13)
3. Clean the mufflers with compressed air, please replace it referring to the spare parts list if it is damaged. (Fig 13)



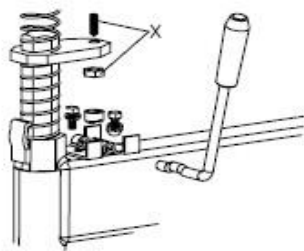


Fig 12

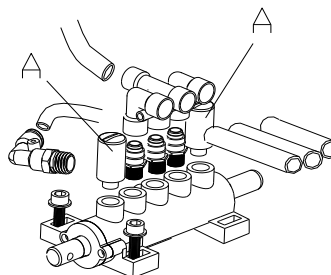
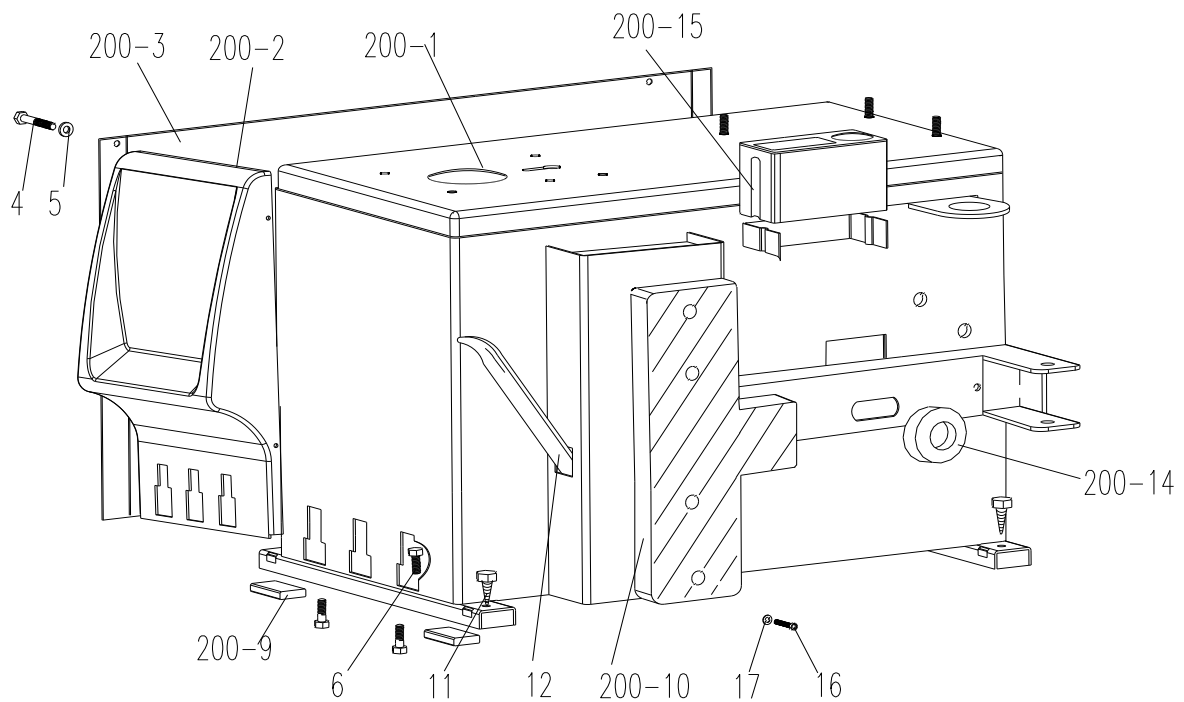


Fig 13

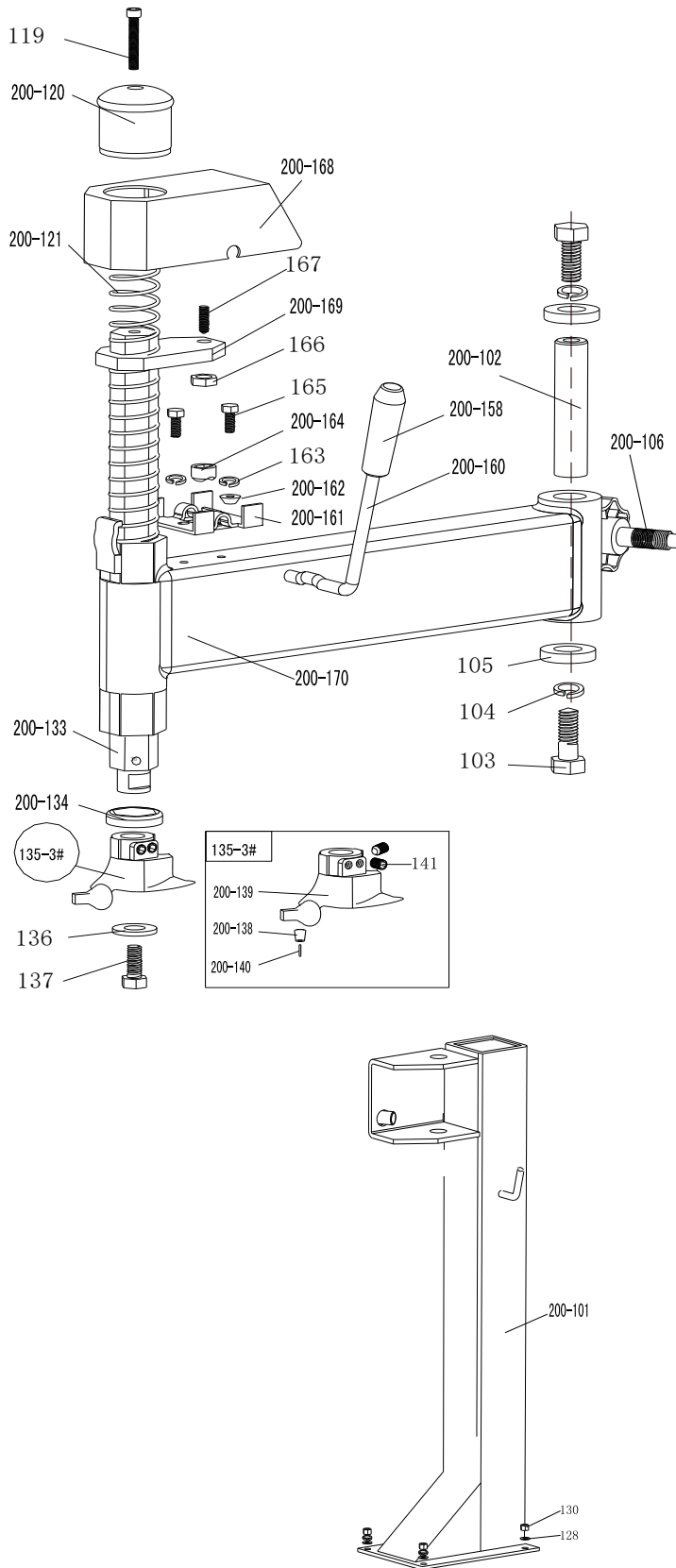
### 13. Trouble shooting table:

Problem	Reason	Solution
The turntable rotate just in one direction or can't rotate.	Reverse Switch broken	Replace the Reverse Switch
	Belt broken	Replace the belt
	The Motor's malfunction	Check the motor cable or terminal block wire; Replace the motor if it was broken.
Demount or fix the wheel, the turntable can't lock (spin with wheel); The jaws delay to open/close; The turntable locks the rim incorrectly.	Leakage of Air network	Check all the parts on the air network.
	The clamping cylinder can't work.	Replace the cylinder piston.
	Worn jaws	Replace the jaws.
	Broken washers of the chuck cylinder	Replace it.
The mounting/demounting head always touch the rim during operation.	The locking plate incorrectly adjust or unqualified.	Replace or adjust it.
	Screws on the chuck loose; the Hexagonal Vertical Arm can't be locked by Locking Plate	Tighten the screws; replace the Locking Plate.
The Bead Breaker Pedal and Jaw open and close Pedal can't turn back to the original position.	pedal spring broken	Replace it.
The Bead Breaker shovel operates difficulty.	Jammed silencer	Clean it or replace it.
	The washer on the Bead Breaker cylinder is broken.	Replace it.

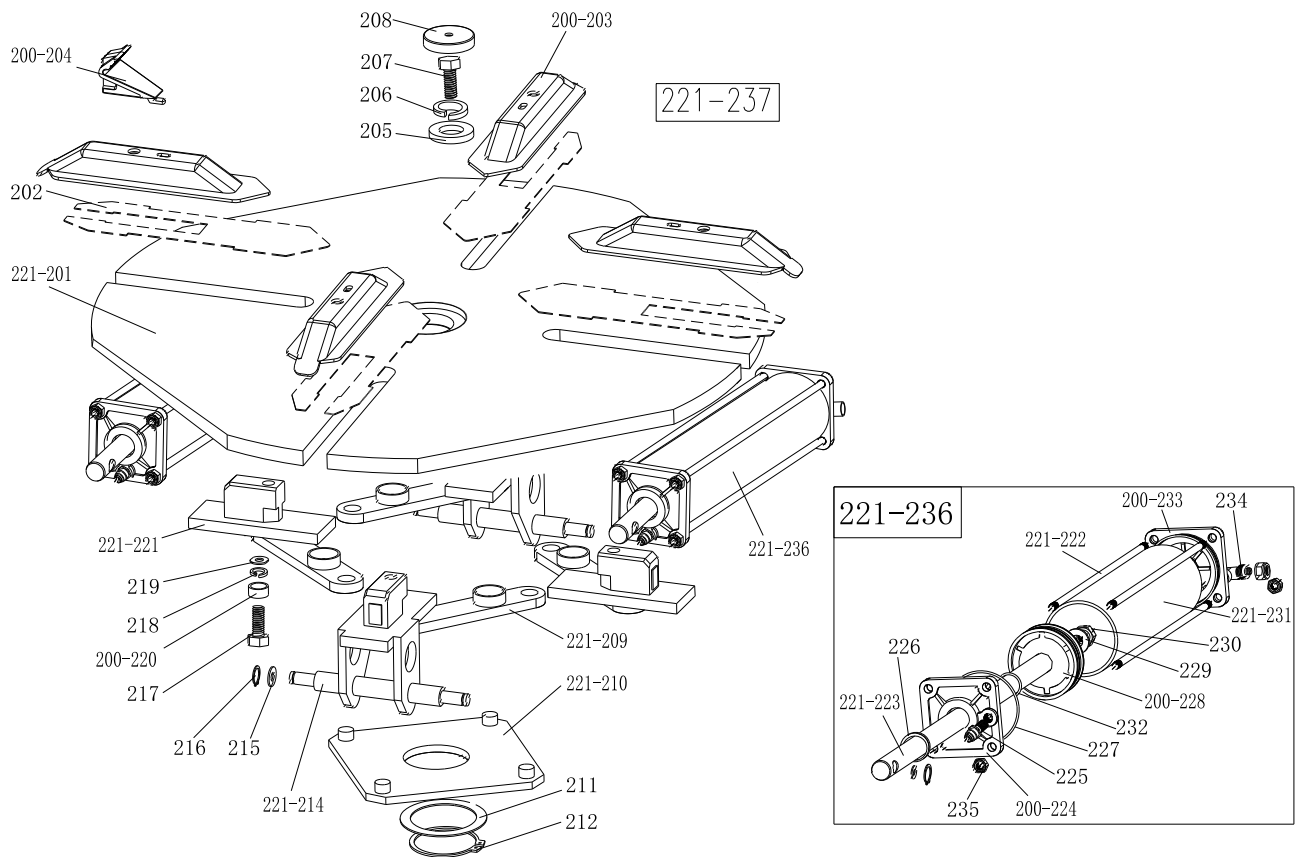
#### 14. Exploded drawing:



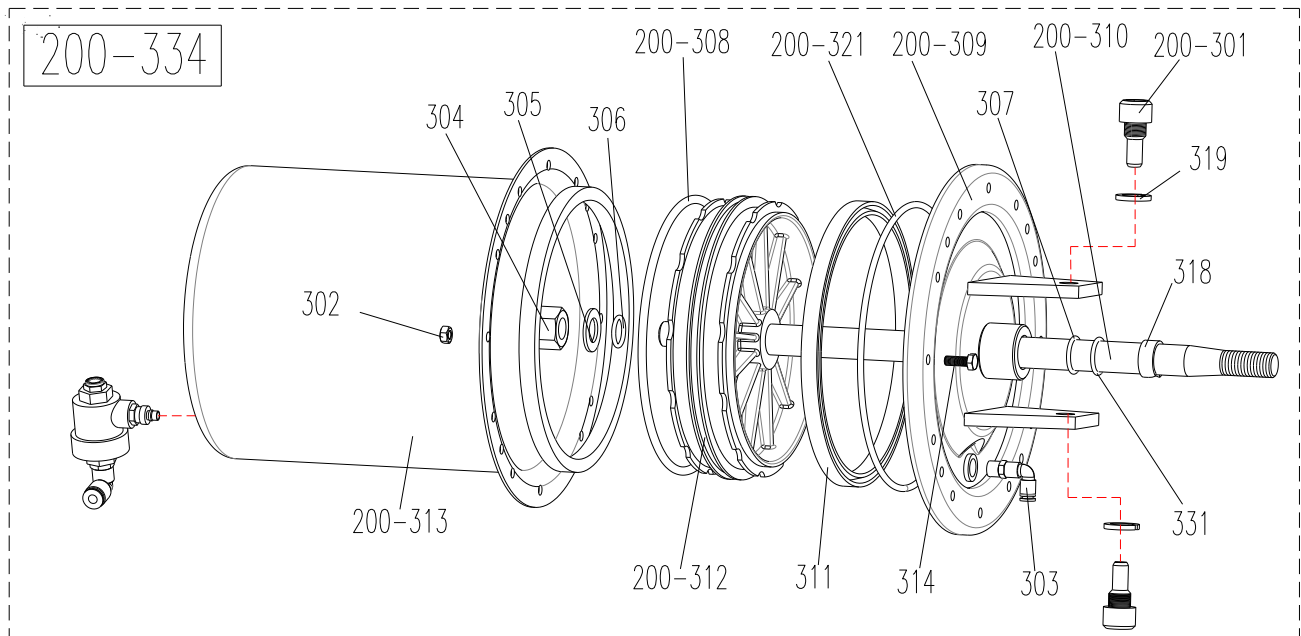
200-1	Determine based on the color of the machine body	Machine body	200-10	JZ20200100032	Bead breaker buffer with pot point
200-2	JZ20200900041	Pedal front cover	11	FJ19004000005	screw ST6.3*38
200-3	Determine based on the color of the left cover	Left cover	12	JZ11900100004	Lifting lever
4	FJ22009000085	Hex socket head screw M6*10	200-13	JZ11700200014	Bead breaker arm spring
5	FJ15006000095	Flat washer $\Phi 6*14*1.2$	200-14	JZ20200200010	Bead breaker arm rubber
6	FJ22012000100	Outer hex bolt M8*25	200-15	JZ12000200164	Oil-water box
7	FJ22009000123	Hex socket head bolt M8*20	16	FJ22009000123	Hex socket head bolt M8*20
200-9	JZ20200100081	Rubber foot buffer	17	FJ15006000107	Flat washer $\Phi 8*17*1.5$



200-101	Determine based on the color of the Square column	Column U2000125
200-102	JZ20200600004	Swing arm pin
103	FJ22012000047	Outer hex bolt M14x30
104	FJ15004000006	Spring washer Ø14
105	JZ20201400046	Big washer
200-106	JZ12001900002	Column adjust handle
119	FJ22009000016	Hex socket head bolt M10*50
200-120	JZ12000200103	Vertical arm cap 200
200-121	JZ11700300039	Vertical arm spring U200
128	FJ15006000006	Washer φ10*20*2
130	FJ21003000001	Self-locking nut M10
200-133	JZ20200700006	Vertical arm 200
200-134	JZ20200700002	Vertical arm washer
135-3#	JZ30204500039	Complete Mount/demount head B03#(without protectors)
136	JZ11801300045	Mount/demount head flat washer
137	FJ22012000010	Outer hex bolt M10×25
200-138	JZ11801300014	Mount/demount head pulley
200-139	JZ11801300021	Mount/demount head B03#
200-140	JZ20201000028	Hex round pin
141	FJ19013000006	Hex socket head bolt M12X12
200-158	JZ12000300002	Locking handle cover
200-160	JZ20200600011	Locking Handle
200-161	JZ20200600013	Locking plate
200-162	JZ20200600006	Locking block cover
163	FJ15004000021	Spring washer Ø8
200-164	JZ20200600005	Eccentric shaft nut
165	FJ22012000100	Outer hex bolt M8*25
166	FJ21011000006	Thin Nut M12
167	FJ19014000004	Hex socket head bolt M12X30
200-168	JZ12000200113	Locking plate cap
200-169	JZ20200600015	Hex locking board 200
200-170	JZ20200600001	Swing arm 470

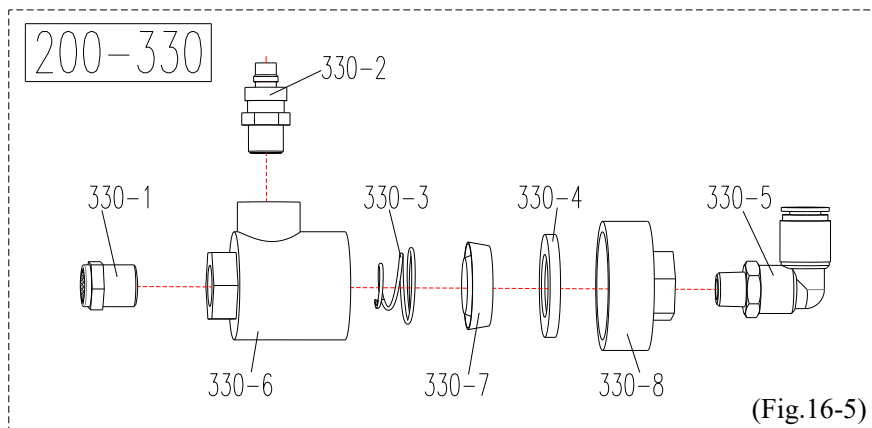


221-201	JZ20201400126	Turntable assembly 630	221-236	JZ30204500082	Complete clamping cylinder U221
200-203	JZ20201400047	Jaw cap assembly U200	221-222	JZ12500800009	Threaded connection rod M8*390
200-204	JZ11801300016	Jaw 200	221-223	JZ12500200011	Clamping cylinder piston rod Φ20*400
205	JZ20201400046	Big washer	200-224	JZ12500300001	Clamping cylinder cover without handle Φ70
206	FJ15004000008	Flat washer 16	225	EQ11005000023	Quick coupler G1/8-Φ8
207	FJ22012000058	Outer hex bolt M16*40	226	FJ29005000002	V-seal ring Φ20*Φ28*7.5
208	JZ12000200083	Turntable cap U200	227	FJ29002000247	O-seal ring Φ63*2.65
221-209	JZ20201400227	Connection rod assembly 615	200-228	JZ12500700008	Complete clamping cylinder piston Φ70
221-210	JZ20201400073	Square Turntable 615	229	FJ15006000019	Flat washer 12*24*2
211	JZ20201400044	Square Turntable Washer	230	FJ21011000006	Nut M12*1.75*T6
212	FJ14004000023	Snap Ring 65	221-231	JZ12500100012	Clamping cylinder barrel Φ70*360
221-214	JZ20201400088	Jaw slide guide with pin 615A	232	FJ29002000086	O-seal ring Φ19.6*2.62
215	FJ15006000019	Flat washer 12*24*2	200-233	JZ12500300002	Clamping cylinder cover with handle Φ70
216	FJ14004000003	Snap Ring 12	234	EQ11004000025	Quick coupler G1/8-Φ8
217	FJ22011000027	Outer hex bolt M12*85	235	FJ21003000014	Nut M8
218	FJ15010000002	Teeth locking washer Φ12*20.5*1			
219	FJ15006000020	Flat washer 12*30*3			
200-220	JZ20201400011	Connection rod nut			
200-237	JZ30204500192	Complete turntable 630, square 24"*U221			
221-221	JZ20201400080	Jaw slide guide without pin 615			



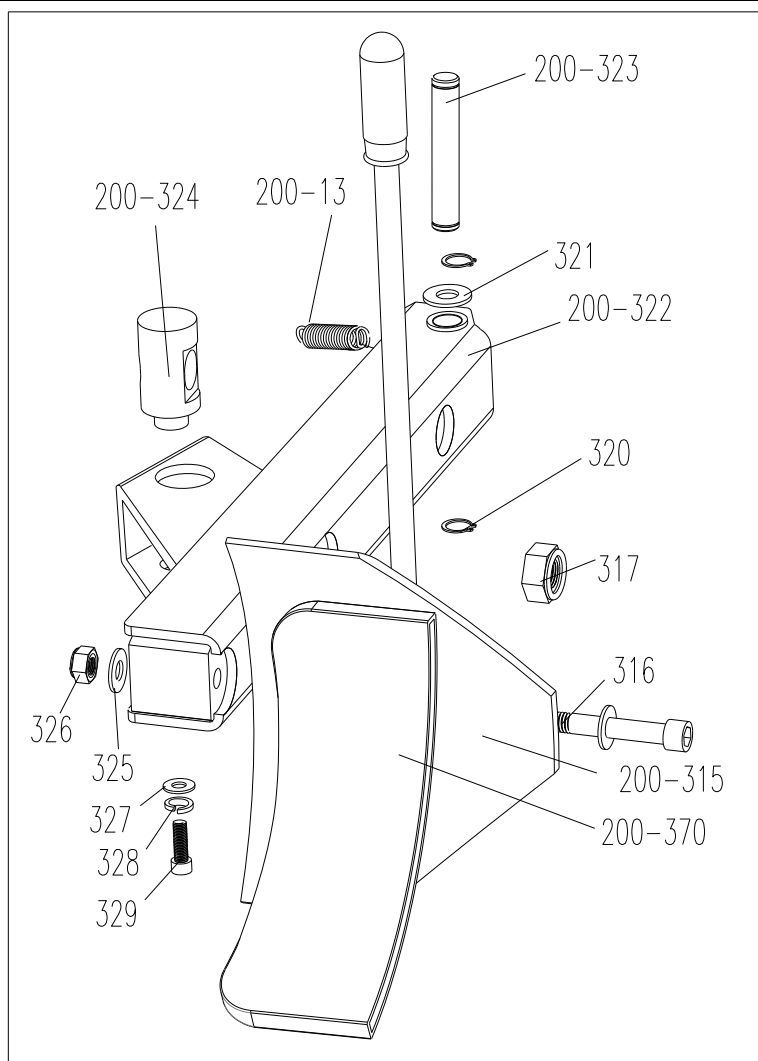
(Fig.16-4)

200-301	JZ20201900021	Hex socket head bolt M14*30	311	FJ29004000001	V-seal Φ185*168*10.8
302	FJ21003000013	Self-locking nut M6	200-312	JZ12500700007	Bead breaker cylinder piston
303	EQ11004000009	Union (90°)1/4- Φ8	200-313	JZ12500100007	Bead breaker cylinder barrel
304	FJ21012000002	Nut M16*1.5	314	FJ22009000093	Hex socket head bolt M6*16
305	FJ15006000039	Flat washer Φ16*28*2	331	FJ29002000086	O-seal 19.6*2.62
306	FJ29002000056	O-seal Φ16*2.65	200-334	JZ30204500092	Complete bead breaker cylinder
307	FJ29002000095	O-seal Φ20*2.65	318	JZ20201300745	Guide belt 30*2.5
200-308	FJ29002000082	O-seal Φ180*4	319	FJ15004000006	Spring washer Φ14
200-309	JZ20201900024	Bead breaker cylinder cover assembly	200-321	FJ29002000071	O-seal Φ170.8*5.33
200-310	JZ12500200008	Bead breaker cylinder piston rod			



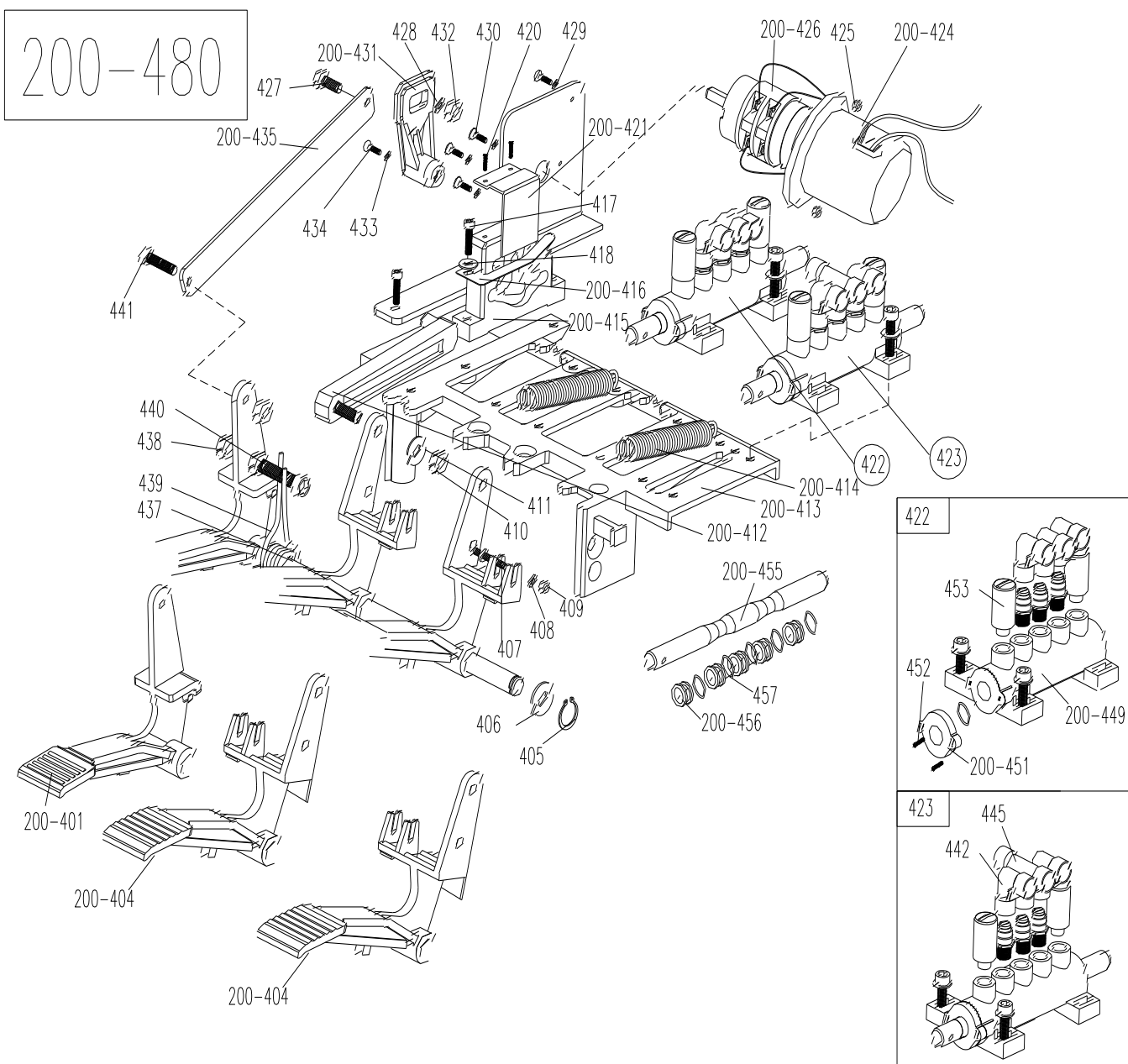
(Fig.16-5)

330	JZ30204500105	Quick release valve assembly
330-1	EQ04001000007	Silencer G1/4
330-2	EQ07004000022	Quick coupler G1/4-Φ10
330-3	JZ11700300045	Compressed spring
330-4	JZ12100400003	Sealing fin
330-5	EQ10003000016	Quick insert elbow G1/8-φ8
330-6	JZ12000100001	Quick dump valve
330-7	JZ12100400004	Sealing ring
330-8	JZ12000200078	Valve cover



(Fig.16-6)

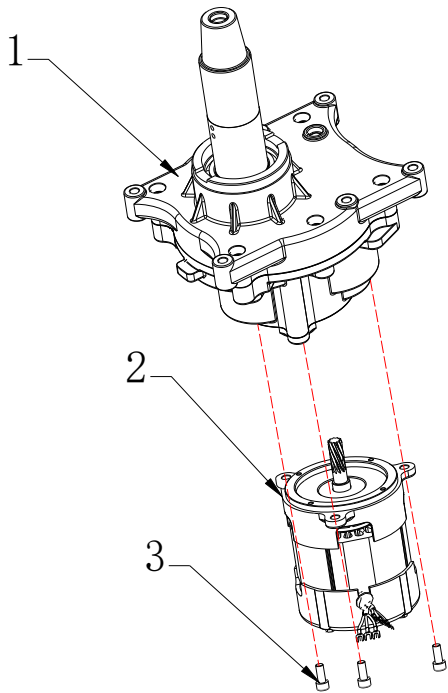
200-13	JZ11700200014	Bead breaker arm spring
200-315	JZ20200300018	Bead breaker shovel assembly
316	FJ22008000016	Hex socket head bolt M12*80
317	FJ21012000002	Nut M16*1.5
200-370	JZ12000200070	Bead breaker shovel protection cover(option)
320	FJ14004000007	Snap ring Φ16
321	FJ15006000039	Flat washer 16*28*2
200-322	JZ20200200008	Bead breaker arm 200
200-323	JZ20200200025	Bead breaker pin
200-324	JZ20201900031	Bead breaker cylinder rotating pin
325	FJ15006000019	Flat washer Φ12*2
326	FJ21003000002	Self-locking M12
327	FJ15006000118	Flat washer Φ8*30*3
328	FJ15004000021	Spring washer Φ8
329	FJ22012000095	Outer hex bolt M8*16



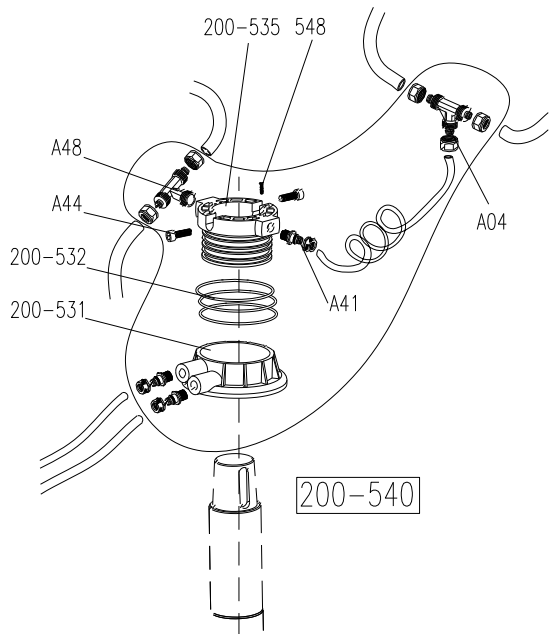
200-401	JZ11801100002	Reverse switch pedal 1#	428	FJ15006000093	Flat washer 6*12*1
221-402	JZ11801100005	5-way valve pedal(right) 3#	429	FJ15006000078	Flat washer 4*8*0.5
405	FJ14004000003	Snap Ring 12	430	FJ19022000023	screw M4*16
406	FJ15006000019	Flat washer 12*24*2	200-431	JZ12001800012	Reverse switch handle
407	FJ19016000018	screw M4*30	432	FJ21003000013	Nut M6
408	FJ15006000078	Flat washer 4*8*0.5	433	FJ15006000064	Flat washer 3*6*0.5
409	FJ21003000010	Nut M4	434	FJ19024000001	screw M3*16
410	FJ21003000014	Nut M8	200-435	JZ20201200038	Pedal Connection Rod
411	FJ15006000107	Flat washer 8*17*1.5	437	JZ20201200039	Pedal front shaft
200-412	JZ12001800016	Cam connection rod	438	FJ21011000025	Nut M8
200-413	JZ11801100001	Pedal suport board	439	JZ11700100003	Pedal twist spring
200-414	JZ11700200015	Pedal Spring U200	440	FJ22009000132	hex socket head cap screw M8*50
200-415	JZ12001800070	Cam U200	441	FJ22009000123	hex socket head cap screw M8*20
200-416	JZ20201200011	Cam washer 0.5	200-455	JZ20201200005	5-way valve rod
417	FJ22009000097	hex socket head cap screw M6*20	200-456	JZ12001800076	5-way valve rod spacer
420	FJ19017000003	screw ST2.9*12	457	FJ29002000023	O - seal Φ12*20*4
200-421	JZ20201200040	Cam cover U200	200-480	JZ30204500004	Complete 3-pedals assembly 200
200-424	JZ12000200080	Reverse Switch Cover	200-426	DD12010000001	Reverse switch LW8-25N2/5.5
425	FJ21011000020	Nut M4	427	FJ22009000097	hex socket head cap screw M6*20

422	JZ30204500269	Complete 5-way valve for clamping cylinder	423	JZ30204500270	Complete 5-way valve for bead breaker cylinder
452	FJ19025000002	screw ST2.9*14	442	EQ10003000016	Union (90°) G1/8-Φ8
453	EQ04002000004	Muffler G1/8	445	EQ10001000024	T-union G1/8-2*Φ8
200-449	JZ12000100007	5-way valve barrel			
200-451	JZ12000200115	5-way valve cover			

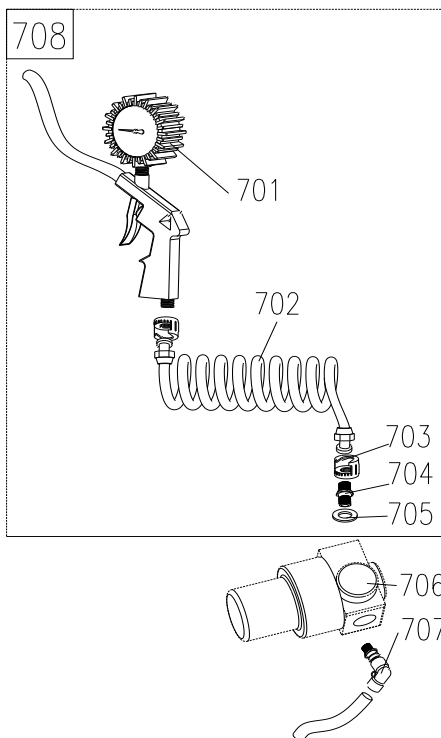




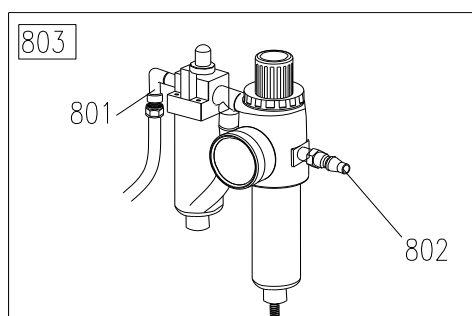
1	JZ30204500067	Complete gear box 220-240V/50HZ/0.37KW/1PH
2	DD01001000055	Motor 220-240V/50HZ/0.37KW/1PH
3	FJ22009000158	hex socket head cap screw M8*25



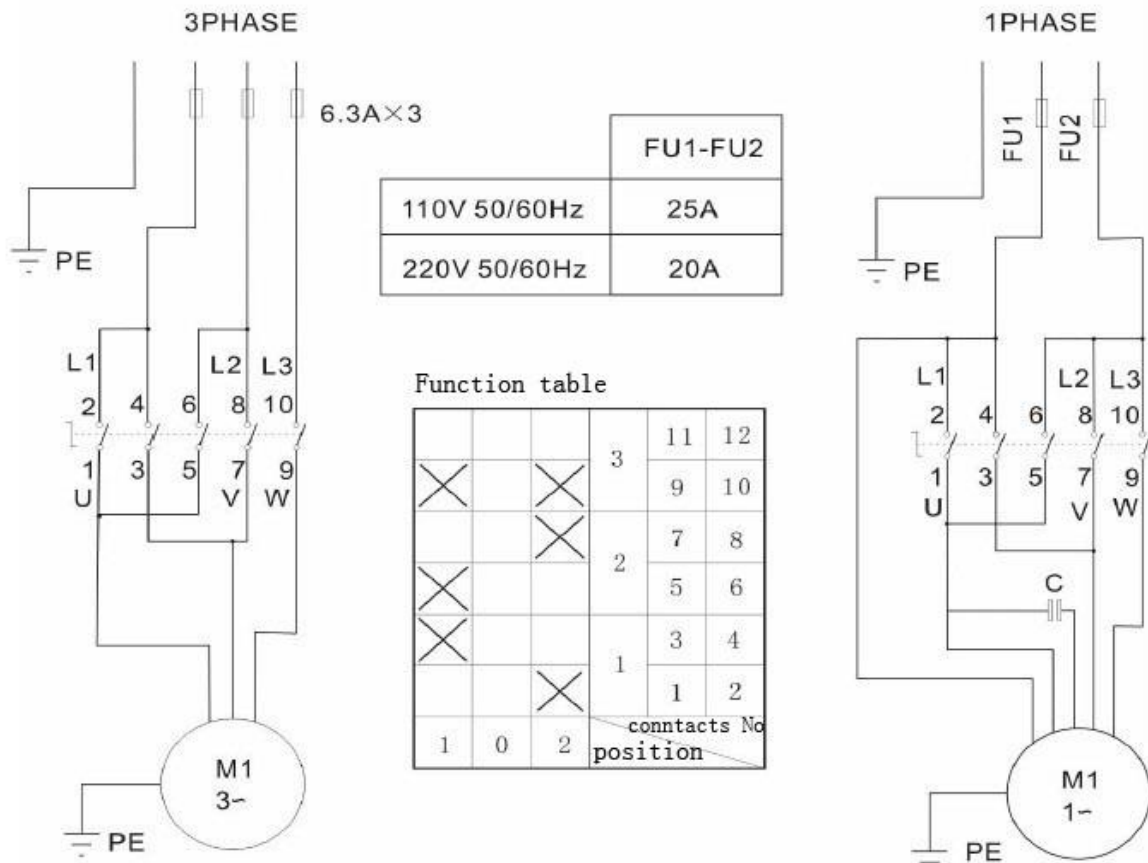
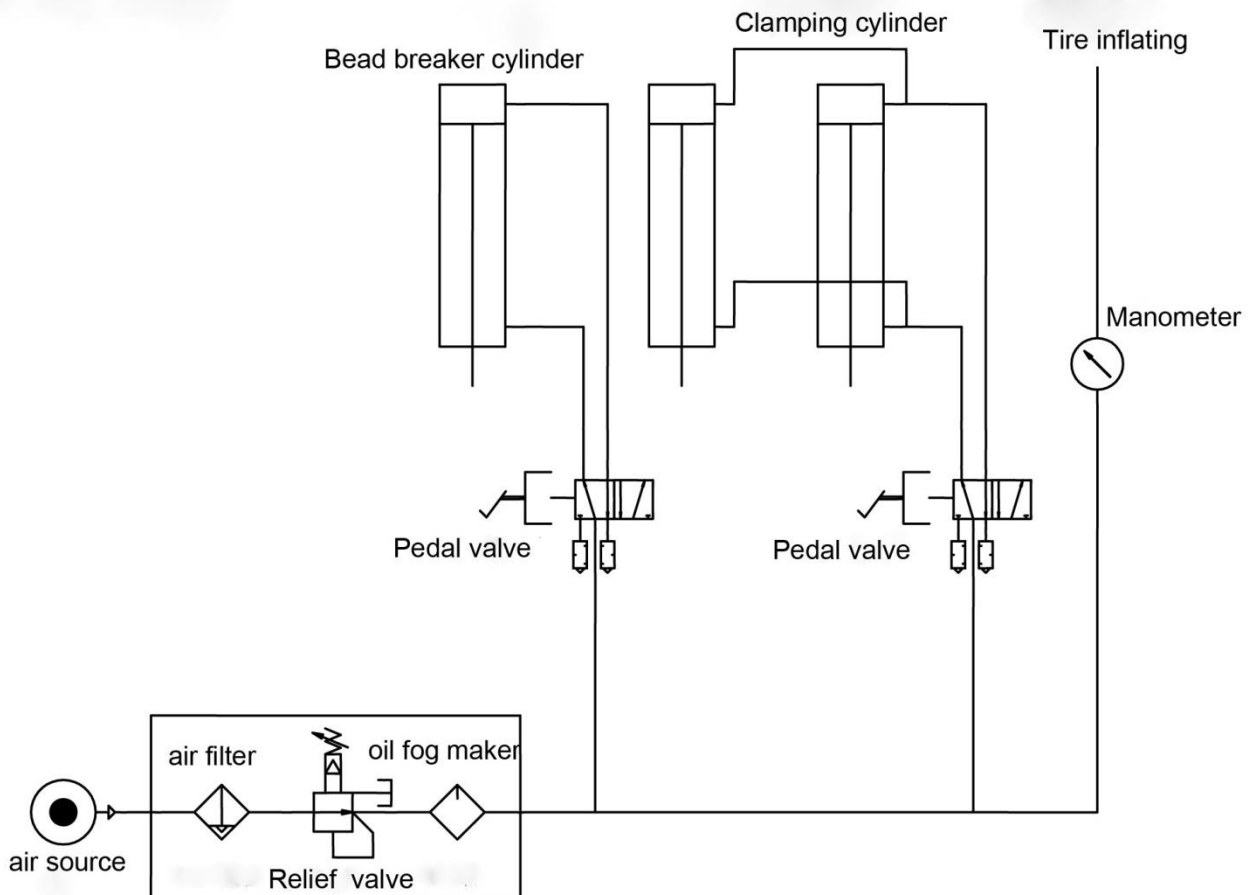
A04	EQ11002000011	T-union 3*Φ8
A44	FJ22009000093	hex socket head cap screw M6*16
A48	EQ11002000018	T-union G1/8-2*Φ8
200-531	JZ20201400216	Rotating valve casing 200 U200
200-532	FJ29002000235	O - seal Φ59.99*2.62
200-535	JZ20201400215	Rotating valve mandrel U200
537	JZ20201700020	Flexible air hose Φ8*Φ5*10m
A41	EQ11005000023	Straight union G1/8-Φ8
548	FJ19006000008	screw M4*6
200-540	JZ30204500257	Complete Rotating valve, plastic U200



701	EQ05001000001	Digital inflating gun 0-10Bar/TG-7
702	JZ20201700004	Helical hose 8*5*2500
703	EQ14003000002	Notch nut G1/4
704	EQ07004000022	Straight union 2*G1/4 external thread
705	FJ15006000028	Flat washer 13*24*1
706	EQ03003000003	Pressure adjust valve
707	EQ10003000009	Quick coupler
708	JZ30204500068	Complete inflating gun, with pressure adjust valve



801	EQ11004000009	Quick elbow
802	Decide by Type of Quick nozzle	Quick nozzle
803	Decide by Type of Quick nozzle	Complete oil fog maker 2000

**15. Circuit diagram:****16. Pneumatic drawing:**

**17.Color reference for square columns in the attachmen:**

编号	名称	规格
JZ20200400524	Square column	Wrinkle RAL7040
JZ20200400509	Square column	Wrinkle PT389C
JZ20200400174	Square column	Flat light RAL6018
JZ20200400173	Square column	Flat light RAL5005
JZ20200400484	Square column	Wrinkle RAL7024
JZ20200400455	Square column	Flat light BT3734
JZ20200400448	Square column	Wrinkle RAL7021
JZ20200400443	Square column	Wrinkle PT288C
JZ20200400439	Square column	Wrinkle RAL2011
JZ20200400436	Square column	Wrinkle RAL5010
JZ20200400411	Square column	Flat light RAL5009
JZ20200400409	Square column	Flat light RAL1006
JZ20200400408	Square column	Flat light PTG13250
JZ20200400404	Square column	Flat light PT288C
JZ20200400387	Square column	Wrinkle RAL7037
JZ20200400373	Square column	Wrinkle RAL7016
JZ20200400362	Square column	Wrinkle RAL7000
JZ20200400359	Square column	Wrinkle RAL6018
JZ20200400349	Square column	Wrinkle RAL5013
JZ20200400331	Square column	Flat light RAL9005
JZ20200400312	Square column	Flat light PT WARM GRAY 7C
JZ20200400297	Square column	Flat light PT300C
JZ20200400258	Square column	Wrinkle RAL9005
JZ20200400247	Square column	Wrinkle GW05-353
JZ20200400241	Square column	Flat light RAL3000
JZ20200400227	Square column	Flat light PT2411C
JZ20200400211	Square column	Wrinkle RAL1028
JZ20200400202	Square column	Wrinkle RAL5015
JZ20200400200	Square column	Wrinkle RAL5005
JZ20200400196	Square column	Wrinkle RAL3002
JZ20200400192	Square column	Wrinkle RAL3020
JZ20200400184	Square column	Wrinkle PT654C
JZ20200400021	Square column	Flat light RAL3002