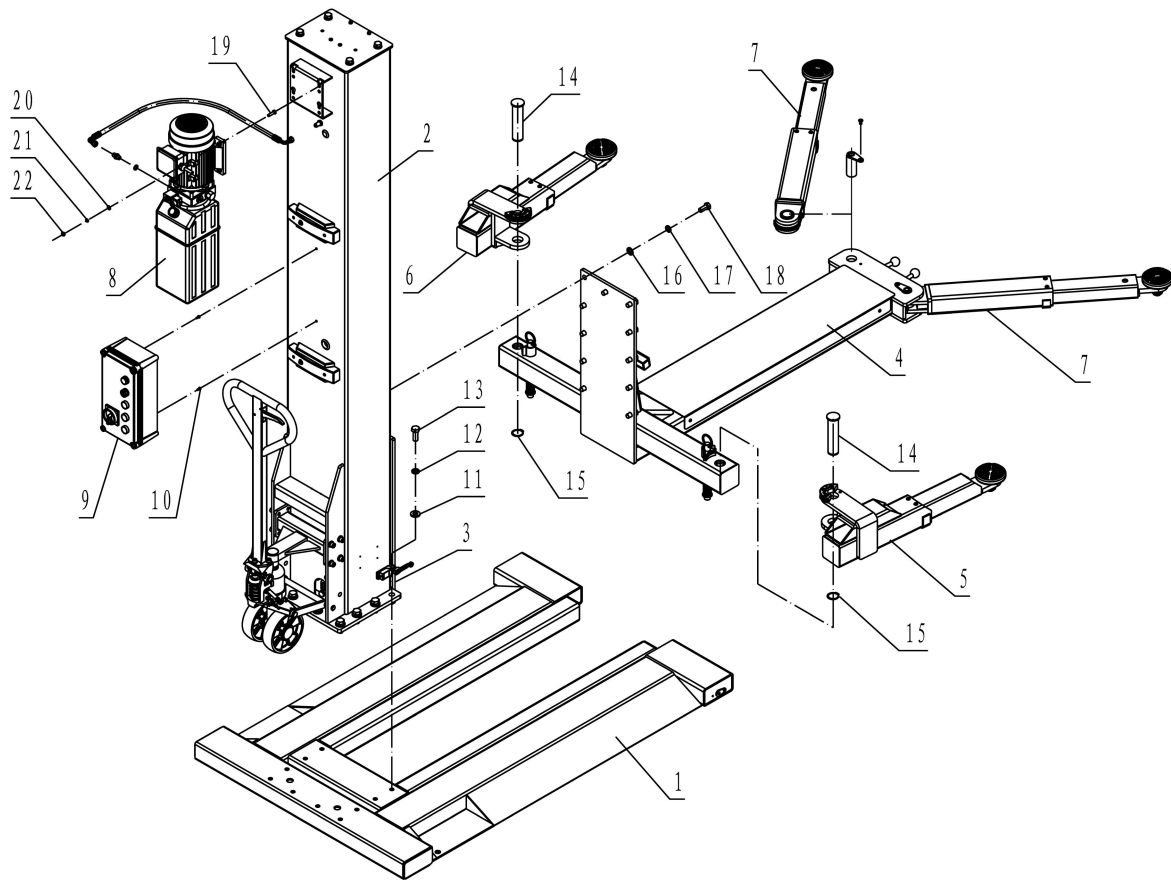


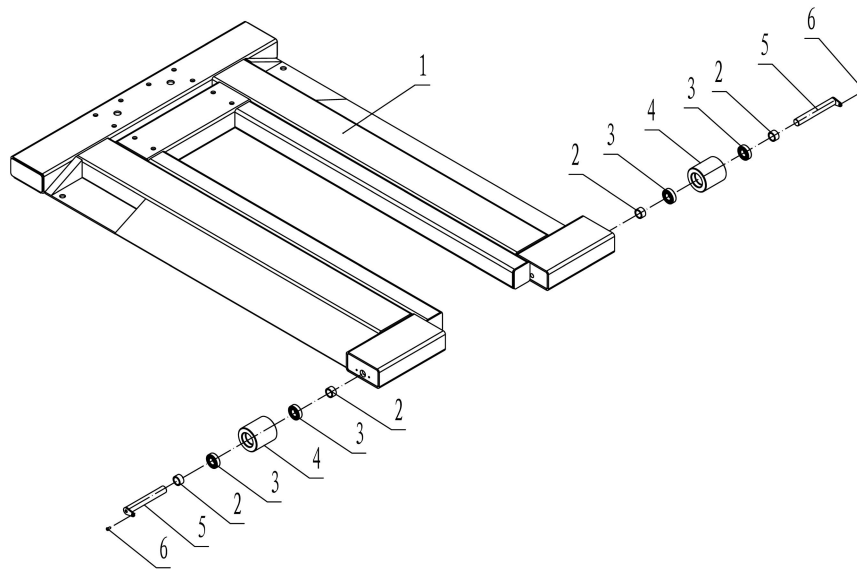
## SF-NM2800 Single post lift part catalogue



No.	Material No.	Description.	Specification.	Qty.	Remarks.
1	SF-NM2800-01	Base plate	99*1154.6*1790	1	Assembly
2	SF-NM2800-02	Column	430*607*2590	1	Assembly
3	SF-NM2800-03	Carriage	258*290*775	1	Assembly
4	SF-NM2800-04	Lifting platform	797*1206*1635	1	Assembly
5	SF-NM2800-05	Rear left arm	194*263*601.5	1	Assembly
6	SF-NM2800-06	Rear right arm	194*263*601.5	1	Assembly
7	SF-NM2800-07	Front arms	92.5*110*749	2	Assembly
8	SF-NM2800-08	Power unit		1	Assembly
9	SF-NM2800-09	24V control box	130*190*380	1	
10	SFB04005L12	Phillips head screw	M5*12	2	Galvanized
11	SFB05018	Flat washer	M18	10	Galvanized
12	SFB06018	Spring washer	M18	10	Galvanized
13	SFB01018L45	External hexagonal screw	M18*45	10	Galvanized
14	SFA080074	Rear arm lock pin	Ø50*170	2	Galvanized
15	SFB09040	Circlip	Ø40	2	Galvanized
16	SFB05016	Flat washer	M16	11	Galvanized
17	SFB06016	Spring washer	M16	11	Galvanized
18	SFB01016L45	External hexagonal screw	M16*45	11	Galvanized (8.8)

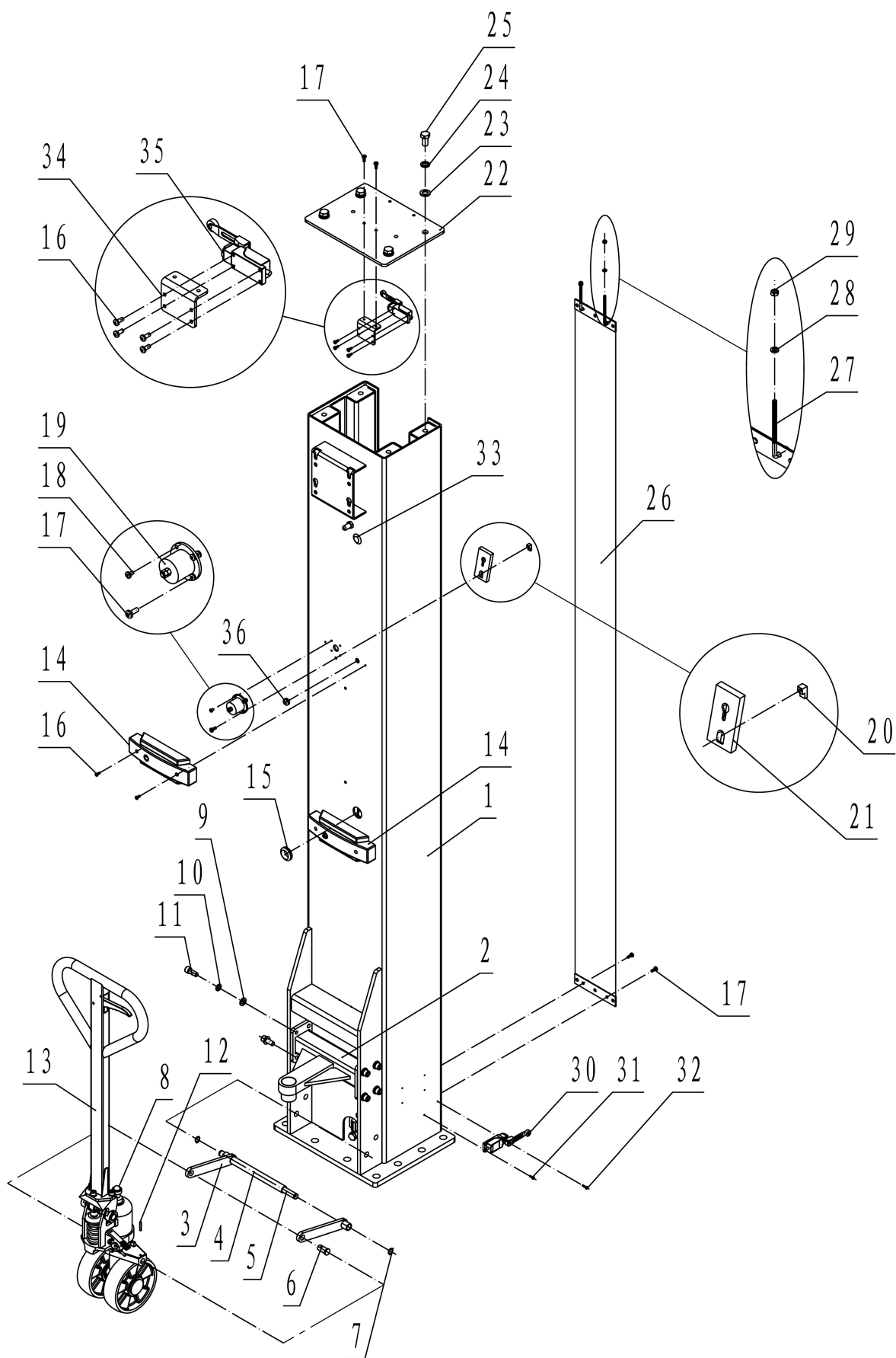
19	SFB01008L30	External hexagonal screw	M8*30	4	Galvanized
20	SFB05008	Flat washer	M8	4	Galvanized
21	SFB06008	Spring washer	M8	4	Galvanized
22	SFB07008	Nut	M8	4	Galvanized

### Base plate part catalogue



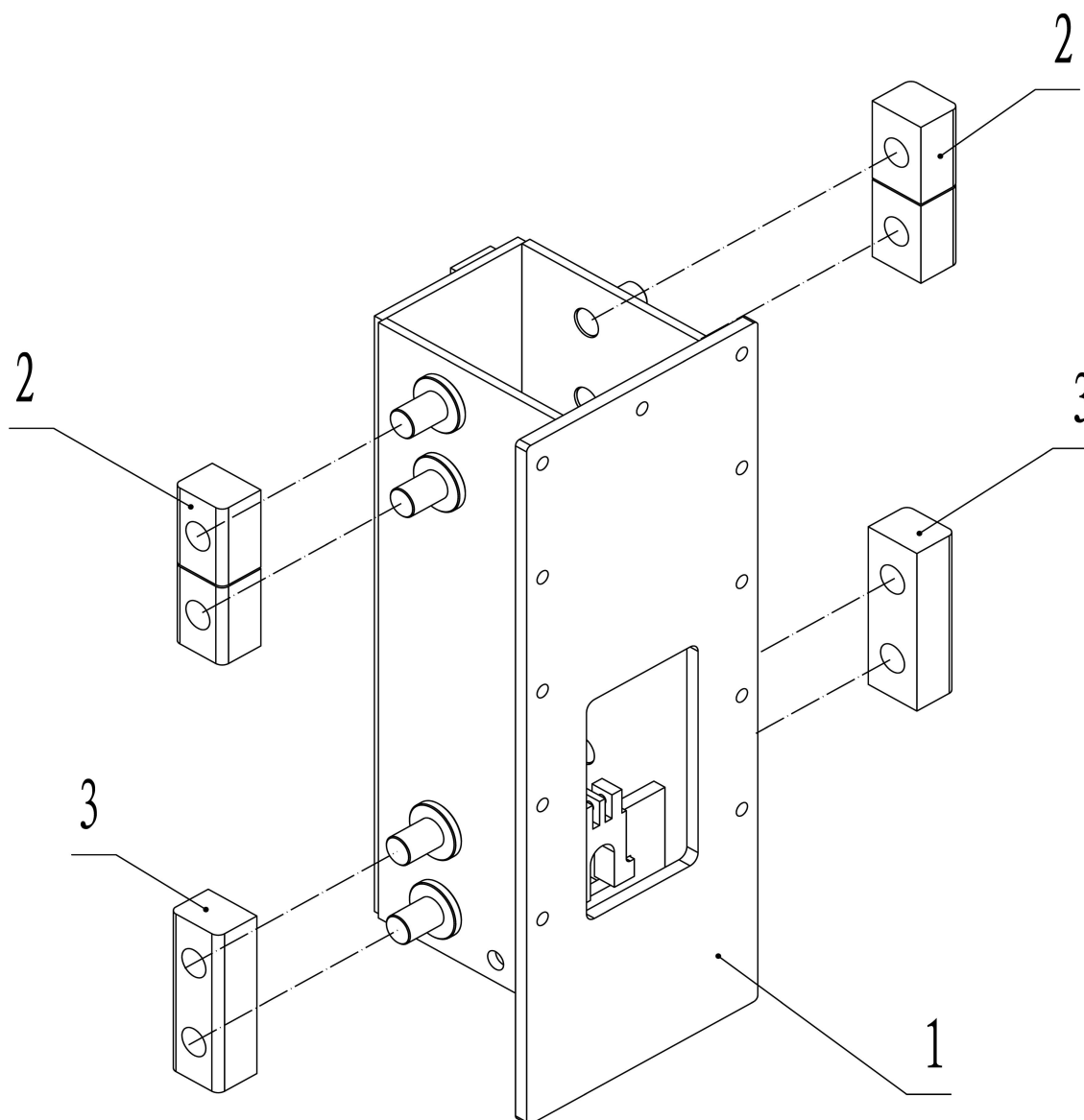
No.	Material No.	Description.	Specification.	Qty.	Remarks.
1	SF01010066	Base plate	1140*1790*84	1	Spraying
2	SFA080135	Nylon wheel distance sleeve	Ø25*19	4	Galvanized
3	SFB21002	Deep groove ball bearing	6205	4	
4	SFA090009	Black nylon wheel	Ø90*100	2	Black
5	SFA080134	Rolling axis welding	26*50.5*184	2	Galvanized
6	SFB03006L10	Hexagon socket round head screw	M6*10	2	Galvanized

### Column part catalogue



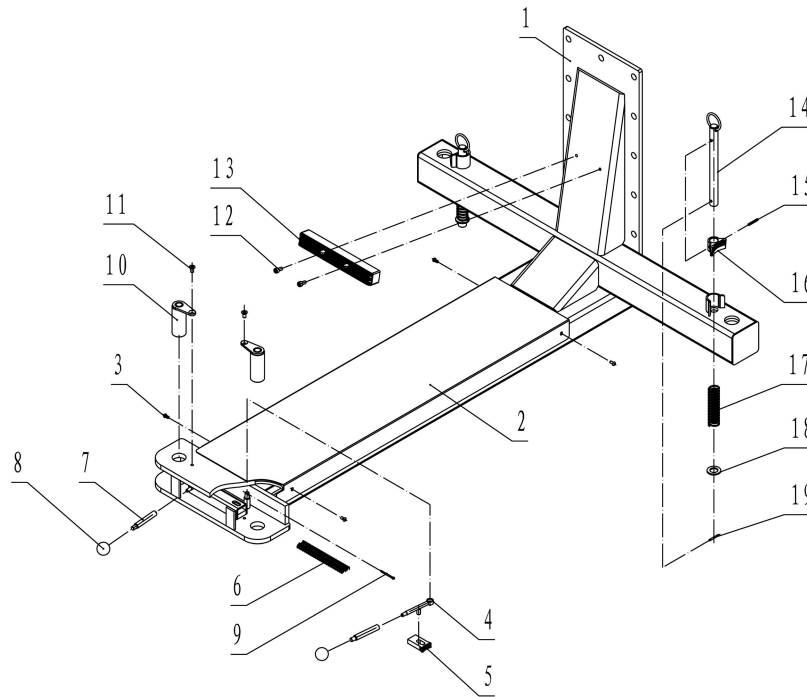
No.	Material No.	Description.	Specification.	Qty.	Remarks.
1	SF01010067	Column	340*430*2566	1	Spraying
2	SF01010028	Movable part	120*290*280	1	Spraying
3	SF01010037	Connected lever	260*17.5*30	2	Spraying
4	SFA080157	Mobile kit distance sleeve	Ø22*215	1	Galvanized
5	SFA080156	Mobile kit fixing shaft	Ø16*138	1	Galvanized
6	SFA120023-01A	Mobile kit connected shaft	Ø20*25	2	Galvanized
7	SFB09016	Circlip	Ø16	2	Black
8	SFA120023-01B	rolling steel ball	Ø18	1	Galvanized
9	SFB05012	Flat washer	M12	8	Galvanized
10	SFB06012	Spring washer	M12	8	Galvanized
11	SFB02012L30	Socket head cap screw	M12*30	8	Galvanized (8.8)
12	SFB12005L30	elastic cylindrical pin	Ø5*30	1	Black
13	SFA120023	Mobile kit		1	
14	SFA120010	Safety cover	250*85*46	2	Black
15	SFA120009	Wire protective sleeve	Ø42*Ø30*14	1	Black
16	SFB04005L12	Phillips pan head screws	M5*12	8	Galvanized
17	SFB04006L16	Phillips pan head screws	M6*16	6	Galvanized
18	SFB04005L8	Phillips pan head screws	M5*8	8	Galvanized
19	SFA150001	Electromagnet	Ø60*77	2	Galvanized
20	SFA080025	Safety block fixing plate	10*10*20	2	Galvanized
21	SFA080024	Safety block	94*50*10	2	Galvanized
22	SF01020321	Top plate	339*258*8	1	Spraying
23	SFB05016	Flat washer	M16	4	Galvanized
24	SFB06016	Spring washer	M16	4	Galvanized
25	SFB01016L45	External hexagonal screw	M16*45	4	Galvanized
26	SFA120057	Curtain	170*2475*5.2	1	Black
27	SFA080019	Hook of curtain	M6*102	2	Galvanized
28	SFB05006	Flat washer	M6	2	Galvanized
29	SFB07006	Nut	M6	2	Galvanized
30	SFA020000E13A	Lowering limit(lowering beeper) switch with wire		1	Assembly
31	SFB04004L12	Phillips pan head screws	M4*12	1	Galvanized
32	SFB04004L25	Phillips pan head screws	M4*25	1	Galvanized
33	SFA120005	Wire protective sleeve A	Ø32*14	1	Black
34	SF01020223	Fixing plate for limit switch	30*55*70	1	Spraying
35	SFA020000D30A	Up limit switch with wire		1	Assembly
36	SFA120004	Electromagnet wire protect rubber	Ø20*12	3	Black

## Carriage part catalogue



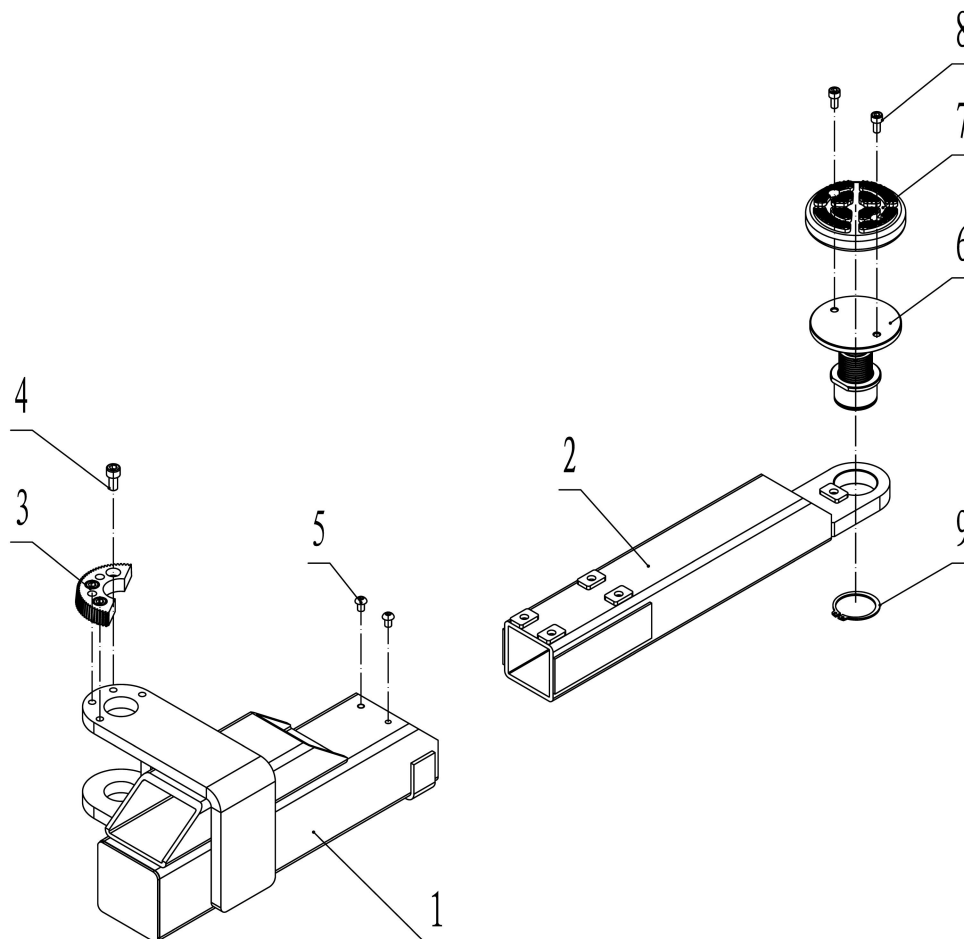
No.	Material No.	Description.	Specification.	Qty.	Remarks.
1	SF01010068	Carriage	290*258*775	1	Spraying
2	SFA090024	Sliding block	48.5*61*88	4	
3	SFA090025	Sliding block A	48.5*61*180	2	

### Platform part catalogue



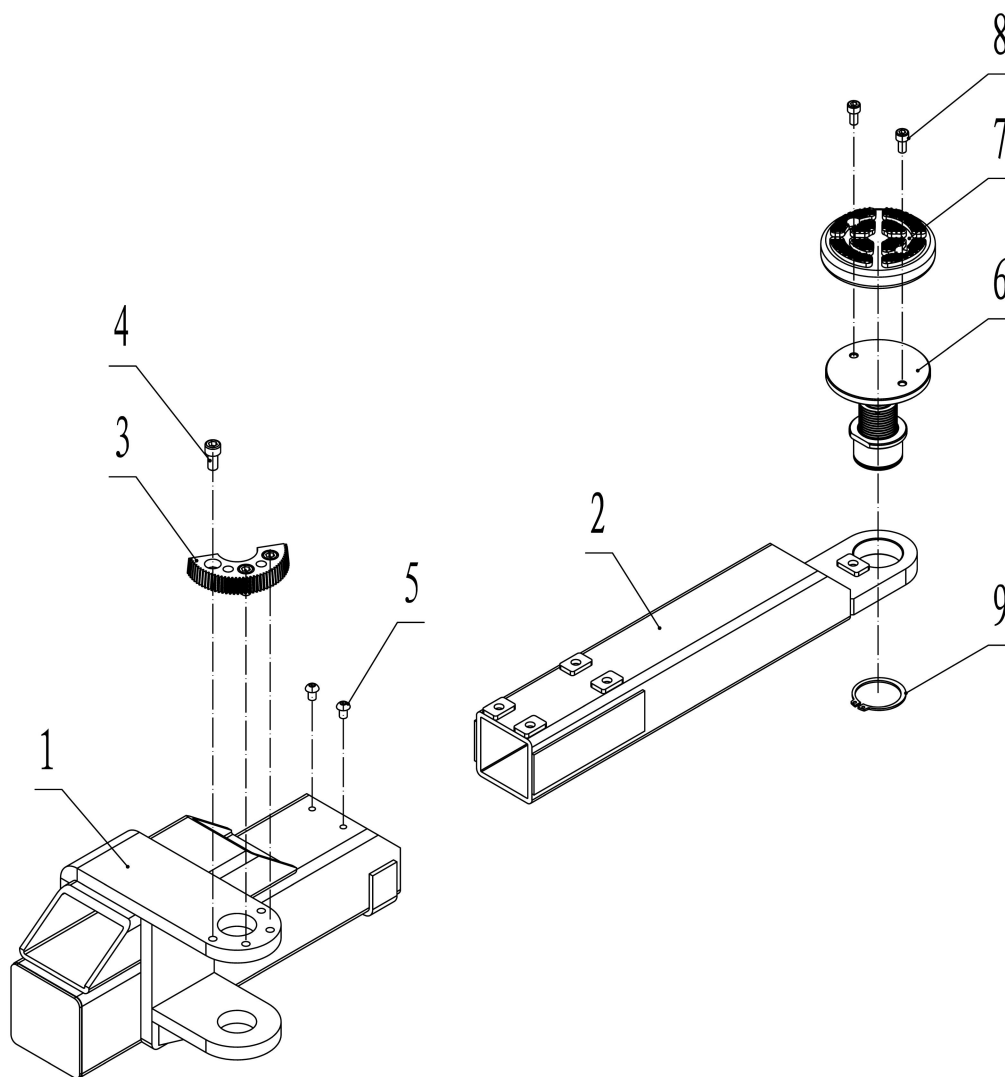
No.	Material No.	Description.	Specification.	Qty.	Remarks.
1	SF01010069	Lifting platform	775*1537*1206	1	Spraying
2	SF01020161	Cover plate	286*60*1150	1	Spraying
3	SFB03006L10	Hexagon socket round head screw	M6*10	4	Galvanized
4	SFA080072	Front arm unlocking spanner	18*108*27	2	Galvanized
5	SFA080071	Front arm lock board	53*35*13	2	Galvanized
6	SFA130004	Spanner spring	∅13*175	2	Black
7	SFA080073	Front arm unlocking lever	∅14*95	2	Galvanized
8	SFA120019	Black ball	∅35	2	Black
9	SFB13004L40	Cotter pin	∅4*40	2	Galvanized
10	SFA080075	Front arm lock shaft	∅38*95	2	Galvanized
11	SFB18008L16	Phillips countersunk head screws	M8*16	2	Galvanized
12	SFB02008L16	Socket head cap screw	M8*16	2	Galvanized
13	SFA120002	Protective rubber pad	37*37*275	1	Black
14	SFA080385	Rear arm lock shaft	∅22*260	2	Galvanized
15	SFB12005L32	Elastic cylindrical pin	∅5*32	2	Black
16	SFA080011	Arm lock	54*39*30	2	Galvanized
17	SFA130002	Lock spring	∅28*165	2	Galvanized
18	SFB05020	Flat washer	M20	2	Galvanized
19	SFB12004L35	Elastic cylindrical pin	∅4*35	2	Black

## Rear left arm part catalogue



No.	Material No.	Description.	Specification.	Qty.	Remarks.
1	SF01010017	Rear left arm outer tube welding	460*255*181	1	Spraying
2	SF01010070	Rear arm inner tube welding	85*580*86	1	Spraying
3	SFA080016	Semicircle arm lock	106.25*51.63*18	1	Galvanized
4	SFB02010L20	Socket head cap screw	M10*20	3	Galvanized (8.8)
5	SFB03008L12	Hexagon socket round head screw	M8*12	2	Galvanized
6	SFA080026A	3 stage screw up pad B	Ø107*72	1	Galvanized
7	SFA120059	Round rubber pad	Ø117*28	1	Black
8	SFB02008L16	Socket head cap screw	M8*16	2	Galvanized
9	SFB09050	Circlip	Ø50	1	Black

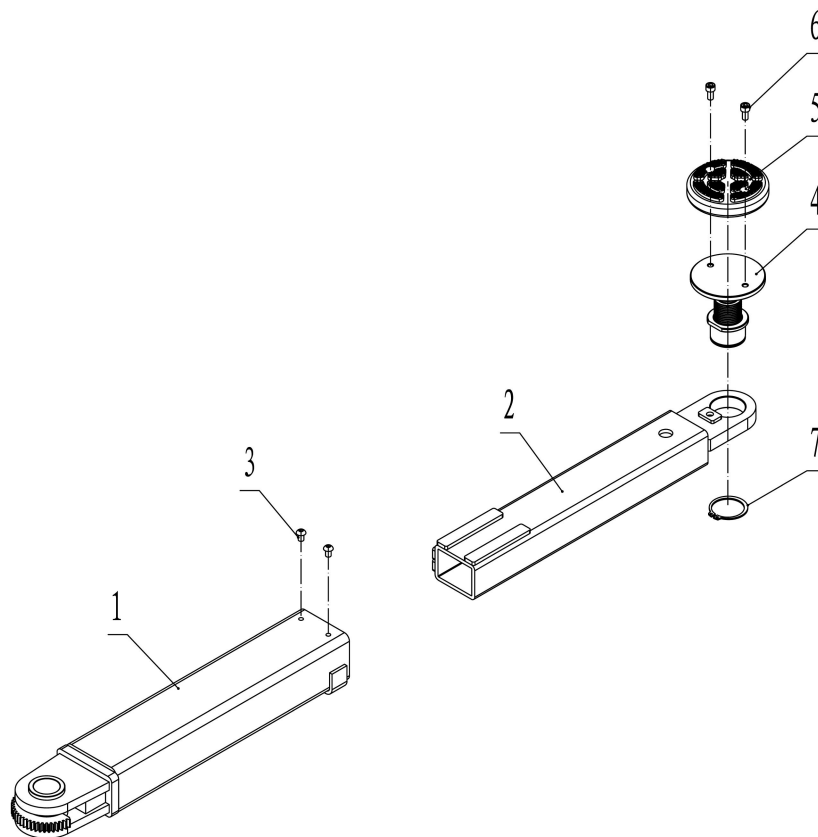
## Rear right arm part catalogue



No.	Material No.	Description.	Specification.	Qty.	Remarks.
1	SF01010018	Rear right arm outer tube welding	460*255*181	1	Spraying
2	SF01010070	Rear arm inner tube welding	85*580*86	1	Spraying
3	SFA080016	Semicircle arm lock	106.25*51.63*18	1	Galvanized
4	SFB02010L20	Socket head cap screw	M10*20	3	Galvanized (8.8)
5	SFB03008L12	Hexagon socket round head screw	M8*12	2	Galvanized
6	SFA080026A	3 stage screw up pad B	Ø107*72	1	Galvanized
7	SFA120059	Round rubber pad	Ø117*28	1	Black
8	SFB02008L16	Socket head cap screw	M8*16	2	Galvanized
9	SFB09050	Circlip	Ø50	1	Black

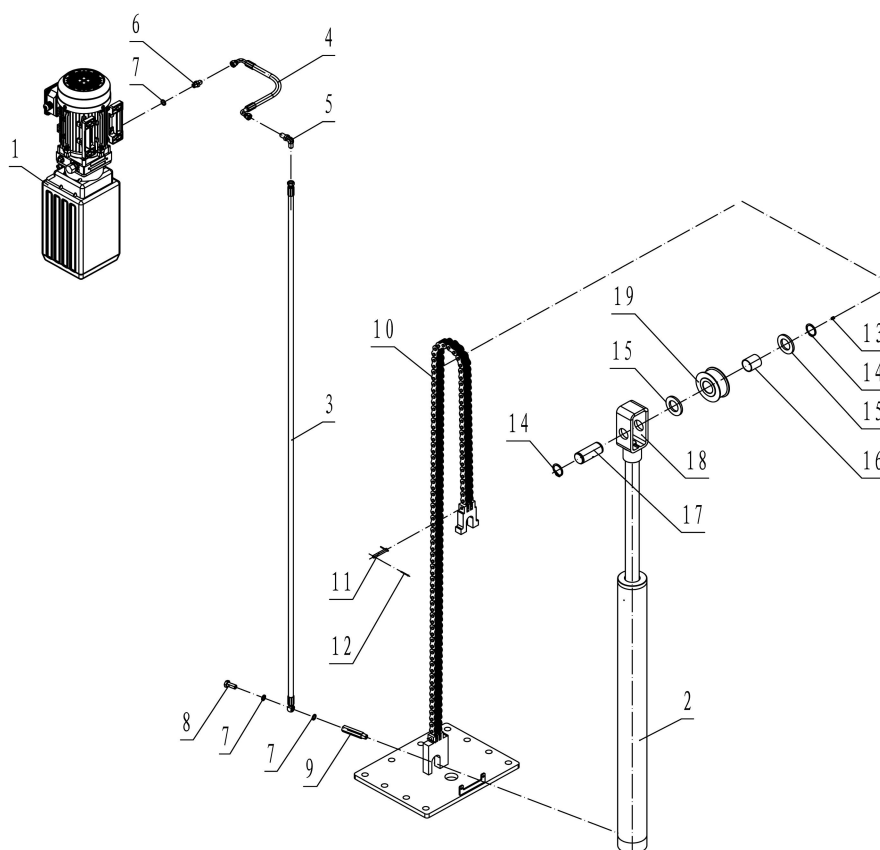


### Front left arm part catalogue



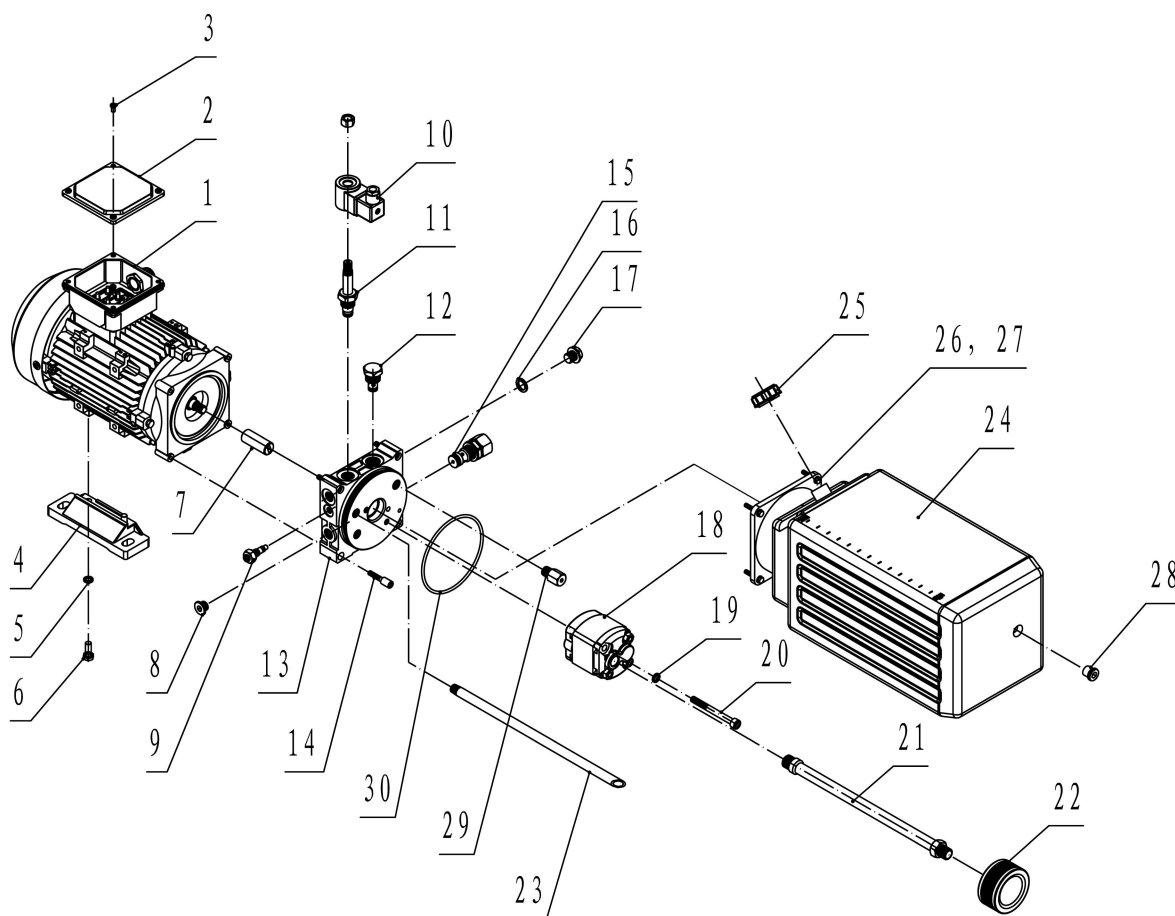
No.	Material No.	Description.	Specification.	Qty.	Remarks.
1	SF01010071	Front arm outer tube welding	110*85*610.4	2	Spraying
2	SF01010072	Front arm inner tube welding	86*65*520	2	Spraying
3	SFB03008L12	Hexagon socket round head screw	M8*12	4	Galvanized
4	SFA080026A	3 stage screw up pad B	Ø107*72	2	Galvanized
5	SFA120059	Round rubber pad	Ø117*28	2	Black
6	SFB02008L16	Socket head cap screw	M8*16	4	Galvanized
7	SFB09050	Circlip	Ø50	2	Black

## Hydraulic system part catalogue



No.	Material No.	Description.	Specification.	Qty.	Remarks.
1	SFA01-02C-08	Power unit	380V, 50HZ, 2.2KW, 3PH		Assembly
2	SFA040010	Cylinder	Ø95*1212	1	Assembly
3	SFA050074	Cylinder oil hose 2190MM	M14*15-025-2190	1	
4	SFA050075	Motor oil hose 320MM	2-M14*1.5-L=320	1	
5	SFA060003	column fixed joint	2-M14*1.5-L=55	1	Galvanized
6	SFA060009	Three way ball valve joint	2-M14*1.5-L=35.5	1	Galvanized
7	SFB14014	Bonded washer	M14	3	
8	SFA060004	Hydraulic hose joint	M14*1.5-L=38	1	Galvanized
9	SFA060034	Cylinder joint	NPT3/8-M14*1.5-90	1	Galvanized
10	SFA110007	Chain	BL844, 97 节	1	
11	SFA110007-01	Chain pin	Ø9.5*62	2	
12	SFB13002.5L28	Cotter pin	Ø2.5*28	4	
13	SFB19008L10	Grease nipple	Ø8*10	1	
14	SFB09040	Circlip	Ø40	2	Black
15	SFA080054	Chain wheel isolation ring	Ø70*6	2	Galvanized
16	SFB08040L45	Oilless bearing	SF-2, 4045	1	
17	SFA080153	Chain wheel shaft	Ø40*95	1	Galvanized
18	SF01010073	Chain anti-derailment	65*210*80	1	Spraying
19	SFA080052	Chain wheel	Ø110*45	1	Galvanized

## Power unit part catalogue



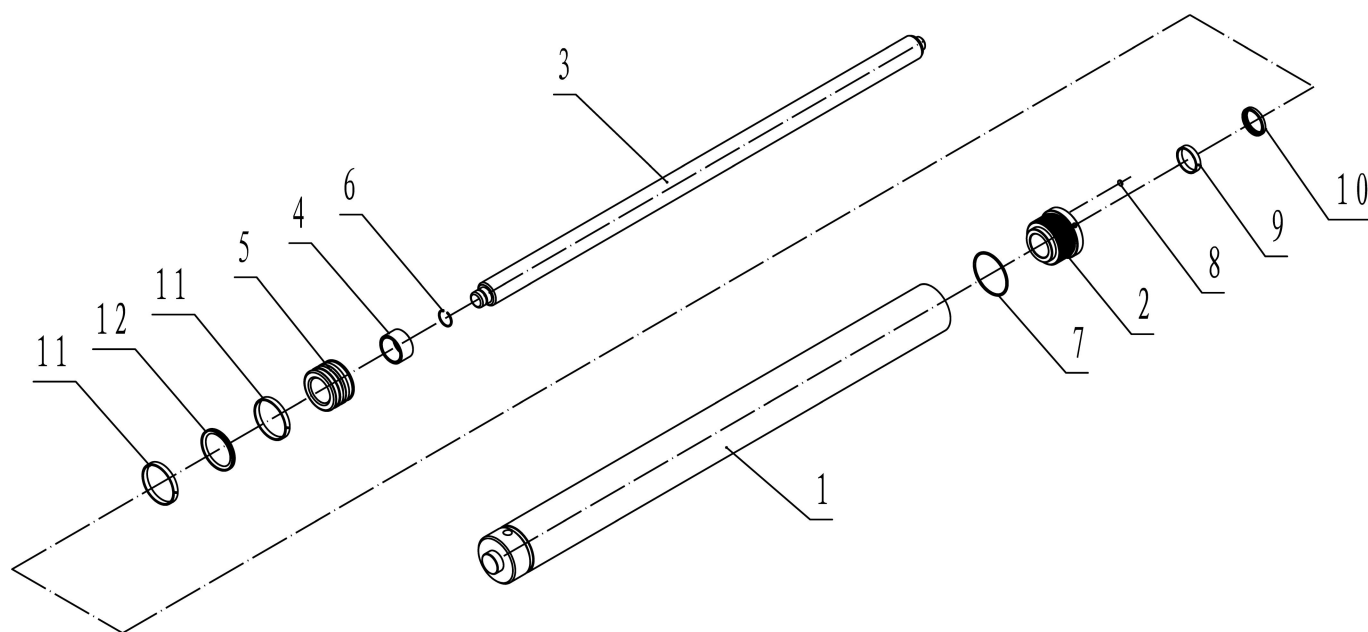
No.	Material No.	Description.	Specification.	Qty.	Remarks.
01	SFI02B-013-DF	220V Motor	220V/50HZ/2.2KW/1PH (DF)	1	Customized
01A	SFI02B-014-DF	380V Motor	380V/50HZ/2.2KW/3PH (DF)		
02	SFI02B-013-DF-0 1	Alu motor cover	102.5*102.5*10	1	
03	SFB04005L10	Phillips pan head screws	M5*10	4	
04	SFI02B-013-DF-0 2	Motor fixing plate	48*154*32	2	
05	SFB06008	Spring washer	M8	4	
06	SFB01008L20	External hexagonal screw	M8*20	4	
07	SFI02H0001-DF	Coupling	Ø18.5*48 (AST)	1	Length 46
08	SFI02M0001-DF- 01	Plastic choke plug for oil return port	(DF)	1	
09	SFI02R0002-DF	Oil flow control valve	(DF)	1	
10	SFI02AB-001-DF	AC24V oil return solenoid valve coil	(DF)	1	
11	SFI02A-001-DF	AC24V solenoid valve(without emergency unloading valve)	(DF)	1	Customized
11A	SFI02A-002-DF	AC24V solenoid valve(with emergency unloading valve)	(DF)		

## PARTS CATALOGUE

MODEL:SF-NM2800

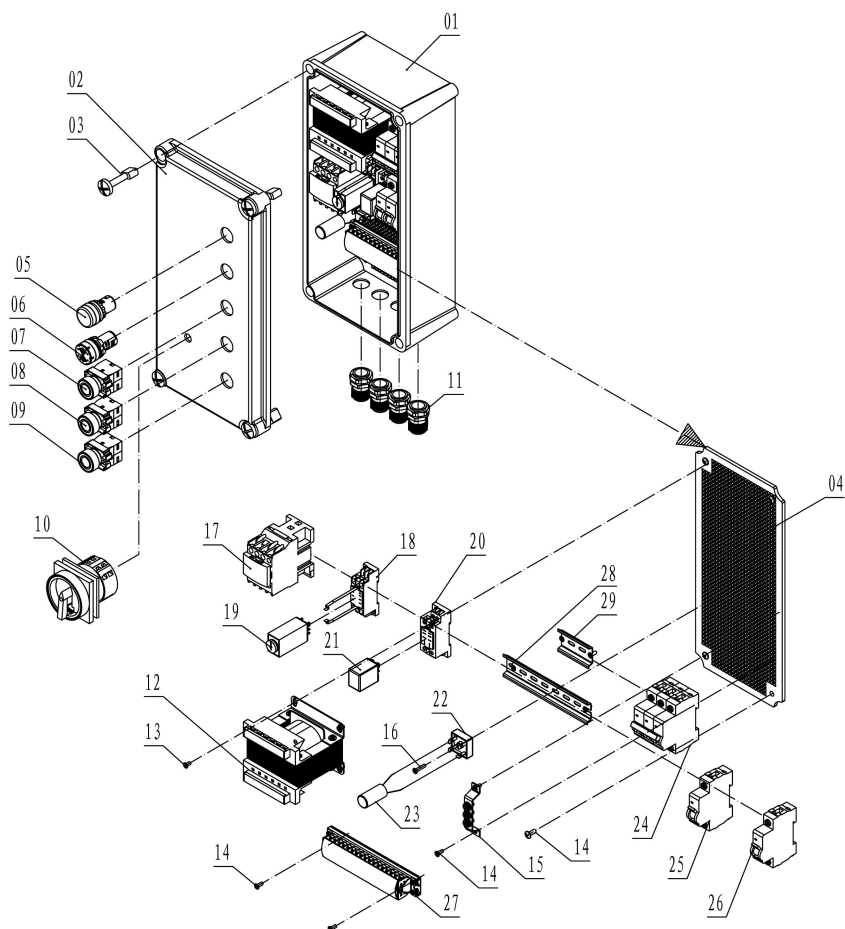
12	SFI02C-001-DF	One way valve	(DF)	1	
13	SFI02M0001-DF	Valve plate	129*129*50	1	Die-casting aluminum
14	SFI02M0001-DF-02	Fixing bolt	(DF)	4	
15	SFI02G0001-DF	Overflow valve	(DF)	1	21Mpa
16	SFB14014	Bonded washer	M14	1	
17	SFA060036	Oil port plug	M14*1.5	1	
18	SFI02O0001-DF	4T, 220V Gear pump	CBK -F 2.1F	1	Customized
18A	SFI02O0002-DF	4T, 380V Gear pump	4T, 3800V 双柱泵站齿轮泵		
19	SFB06008	Spring washer	M8	2	
20	SFB02008L80	Socket head cap screw	M8*80	2	
21	SFI02K0001-DF-10L	Suction tubing	10L	1	
22	SFI02S0002-DF	Oil filter	Ø68*39	1	
23	SFI02J0001-DF-10L	Oil return pipe	(DF)	1	
24	SFI03-SL-DF-10L	10L plastic oil tank	(DF)	1	
25	SFI03-010002-DF	Oil tank cap	(DF)	1	
26	SFB05005	Flat washer	M5	4	
27	SFB01005L28	External hexagonal screw	M5*28	4	
28	SFI03-SL-DF-10L-01	Choke plug under the oil tank	M14*1.5	1	
29	SFI02I0001-DF	Cushion valve	M14*1.5	1	
30	SFI02N0001-DF	O shape seal ring	Ø112*3.5	1	

### Cylinder part catalogue



No.	Material No.	Description.	Specification.	Qty.	Remarks.
1	SFA040010-01	Main cylinder welding part	Ø93*1115	1	Spraying
2	SFA040010-02	Cylinder cap	Ø63*65	1	Spraying
3	SFA040010-03	Cylinder piston rod	Ø45*1122	1	Galvanized
4	SFA040010-04	Cylinder limit ring	Ø55*30	1	Galvanized
5	SFA040010-05	Cylinder piston	79*50	1	45#
6	SFB38030	Round circlip	d0=30 (GB895.1)	1	Black
7	SFI010015-JY-01	O shape ring	D85X3.1	1	NBR
8	SFI010001-JY-06	Silencer	Ø10*2	1	Steel
9	SFI010015-JY-02	Bearing seal ring	d45×50×10	1	POM
10	SFI010015-JY-03	Dust-preventing seal ring	d45×53×5	1	TPU
11	SFI010015-JY-04	Bearing seal ring	D80X75X9.7	2	POM
12	SFI010015-JY-05	Seal ring	D80×64.5×6.3	1	PU+NBR

## 24V control box part catalogue



No.	Material No.	Description.	Specification.	Qty.	Code.	Remarks.
01	SFA02-02BE-07-01A	Control box main part	190*380*102	1		
02	SFA02-02BE-07-01B	box cover	190*380*30	1		
03	SFA02-02AF-01C	Plastic screws	∅22*58	4		
04	SFA02-02AF-01D	Insulation board	160*350*9	1		
05	SFF09-ZM-AD16-22DS	Indicator light	AD16-22DS (SHSNAO)	1		
06	SFF09-ZM-AD16-22SM	Beeper	AD16-22SM (SHSNAO)	1		
07	SFF09-ZM-NB2-BE101,10 2	Up button	NB2-BE101,102 (APDIQI)	1		
08	SFF09-ZM-NB2-BE101,10 1	Lock/down II button	NB2-BE101,101 (APDIQI)	1		
09	SFF09-ZM-NB2-BE101,10 2	Down button	NB2-BE101,102 (APDIQI)	1		
10	SFF09-LW26GS-20/04-2	Power switch	LW26-20GS/04-2	1		
11	SFF09-PG13.5	Waterproof connectors	PG13.5	4		
12	SFF09A-ZM-BK-100VA	Transformer	BK-100VA	1	TC	
13	SFB39004L10	Cross tapping screw	M4*10	4		
14	SFB39004L12	Cross tapping screw	M4*12	8		
15	SFF09-14*80*1.5	Three-hole grounding copper bar	14*80*1.5	1		
16	SFB39004L20	Cross tapping screw	M4*20	1		

## PARTS CATALOGUE

MODEL:SF-NM2800

17	SFF09-ZM-CJX2 1810, AC24V	AC contactor	CJX2 1810, AC24V (GBUCYTOTW)	1		
18	SFF09-ZM-PYF08A	Time relay seat	PYF08A (OMRON)	1		8 terminals
19	SFF09-CHNT-JSZ6-2	Time relay	JSZ6-2, AC24V (CHNT)	1		8 terminals
20	PTF08A-E (OMRON)	Intermediate relay seat	PTF08A-E (OMRON)	1		8 terminals
21	SFF09-ZM-LY2N-J, 10A, AC24V	Intermediate relay	LY2N-J, 10A, AC24V	1		8 terminals
22	SFF09B-001	Rectifier bridge	KBPC3510(JW)	1		
23	SFF09-ZM-4700UF	capacitor	4700UF	1		
24	SFF09-ZM-TGB1N-63, C25	3P breaker	TGB1N-63, C25 (TENGEN)	1		
25	SFF09-ZM-TGB1N-63, C1	1P breaker	TGB1N-63, C1 (TENGEN)	1		
26	SFF09-ZM-TGB1N-63, C6	1P breaker	TGB1N-63, C6 (TENGEN)	1		
27	SFF09-TD-1517	Wire connecting line	TD-1517 (15A)	1		
28	SFF09-35*155*1	Electrical guide rail	35*155*1	1		
29	SFF09-35*56.5*1	Electrical guide rail	35*56.5*1	1		